

2024 GREATER BIRMINGHAM PARADE *OF* HOMES



APRIL 26-28 & MAY 3-5

— birminghamparadeofhomes.com —



Your Large and Small Tree,
Shrub and Drainage **Experts**



**High Quality
Service and
Customer
Satisfaction
is our priority**

Gardner has the BEST PRICE

for Trees, Shrubs, Privacy Screens & Astroturf

We're committed to surpassing your expectations for your beautiful outdoor spaces by **creating and maintaining landscaping, hardscape installation** and effectively **minimizing drainage and erosion issues.**

Call to schedule your landscaping plan

205-401-3347

GardnerLandscapingSales@gmail.com • GardnerLandscapingLLC.com



CUSTOM HOMES, TAILORED TO YOUR LIFESTYLE AND TASTE
BIRMINGHAM • SMITH LAKE • LAKE MARTIN



Timeless Design. Quality Craftsmanship.

SCOTT UNDERWOOD • 205.965.3631 • CENTENNIALHOMESLLC.COM

TABLE OF CONTENTS

06 | WELCOME LETTER

WELCOME FROM OUR CHAIRMAN

08 | IDEAL HOME

BUILDING TIMELESS HOMES

12 | WHO'S WHO

MEET OUR BUILDERS

16 | WHERE TO GO

COMMUNITIES IN THE PARADE

20 | PARADE ROUTE

MAPS TO FIND YOUR WAY

24 | INDEX OF HOMES

REFERENCE THIS LIST TO FIND A HOME

27 | PARADE OF HOMES

VIEW THE HOMES IN THE PARADE

46 | IDEAL SPONSORS

THANK YOU TO OUR SPONSORS

THANK YOU TO OUR ADVERTISERS

Alabama Appliance (48)
Birmingham Glass Works (37)
Centennial Homes (3)
Complete Home Specialties LLC (17)
First Federal Mortgage (35)
Gardner Landscaping (2)
Ingram and Associates (31)
Issis & Sons (11)
J. Wright Building Company | Wright Building Company (7)
James Hardie Building Products (35)
Mayer Electric Lighting (37)
Oak Mountain Cabinetry Inc (45)
River Bank & Trust (29)
Russell Lands (5, 19, 43)
Taylor Burton Company (19)
The Neighborhood Plumber (33)
Webb Concrete & Building Materials (25)
We'll Do It (47)

PUBLISHED FOR:

Greater Birmingham
Association of Home Builders
5000 Grantswood Road, Suite 240,
Birmingham, Alabama 35210
P: 205-912-7000 F: 205-451-0201
birminghamparadeofhomes.com

FOR ADVERTISING, PLEASE CONTACT:

Dan Starnes at dan@starnesmedia.com

STARNES
M E D I A

PUBLISHED BY:

Starnes Media
1833 27th Ave S.
Homewood, AL 35209
P: 205-313-1780
www.starnesmedia.com



Disclaimer - Starnes Media produces seven monthly newspapers in the Birmingham metro area: 280 Living, Cahaba Sun (Trussville), Homewood Star, Hoover Sun, Vestavia Voice and Village Living (Mountain Brook). Starnes Media also produces chamber membership directories, quality-of-life magazines and business marketing materials. Starnes Media. All rights reserved. Reproduction or use of editorial or graphic content without prior permission is prohibited



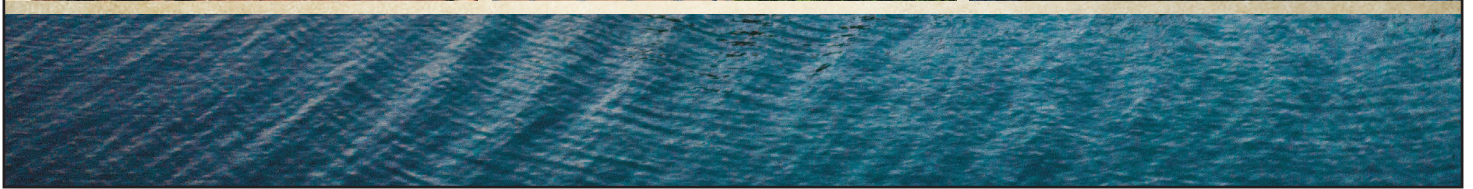
THE RIDGE

Whether you're looking for a new getaway in the pristine homesites of South Ridge Harbor, an upscale-farmhouse home in Ridge Run, or a rustic-modern design in Russell Cabins, The Ridge offers all this and more.



RussellLands.com

Visit our participating homes in the 2024 Parade of Homes



Welcome

This year, my committee and I are aiming to set a new standard for the Parade of Homes. This lineup of residences is the best of the best – it's a testament to the fact that we've got some of the most talented, hardest-working builders in the country right here in Birmingham. The Parade's 2024 Ideal Home, located at 2079 Lindsay Lane in The Highlands subdivision of Chelsea, will showcase the best local firms have to offer. Custom home builder B&K Build, the developer of the 2024 Ideal Home, describes the property as incorporating the latest in residential technology, elegant design sensibilities and sweeping views of wooded surroundings.

Along with B&K Build's contributions, the work of the best in the building and remodeling industry will be represented in the 2024 Parade lineup. The event has also expanded to include two new categories: build to rent and remodeling. Remodeling entries will be on display exclusively online. Participating Parade residences will be open to the public April 26-28 and May 3-5. Doors will be open from 10 a.m. to 6 p.m. each Friday and Saturday of the event and from noon to 6 p.m. on Sundays. Visitors are encouraged to visit birminghamparadeofhomes.com and @BhamParadeofHomes on Facebook for more information.



Scott Underwood

2024 Parade of Homes Chairman



PRESENTED BY



J. WRIGHT
BUILDING COMPANY



Southern Living
custom builder program



205-820-0100 • jwrightbuildingcompany.com • 1001 Beaumont Ave, Ste. 200 • Birmingham, AL 35242



WRIGHT HOMES
INCORPORATED



205-477-6700 • wrighthomesinc@aol.com • wrighthomesinc.com



2079 Lindsay Lane, Chelsea

2024 Ideal Home

Presented by B&K Build

By **BLAIR MOORE**

The highlight of this year's Parade of Homes can be found in Chelsea's picturesque The Highlands Community. A modified version of the "Noah" floor plan by Frusterio Design, the 2024 Ideal Home was built by one of Birmingham's premier custom home builders: B&K Build. This traditional modern home has stunning curb appeal and interior features found nowhere else in Birmingham.

Builder Brandon Parker was drawn to the floor plan because of its exquisite exterior and versatile layout. With three levels, two garages and over 5,500 square feet between indoor and outdoor living spaces, the home truly has something to offer everyone.

A MUST-SEE DREAM HOME

This year's Ideal Home features an exterior of natural stone and off-black painted brick. Through the front door is a calming, modern palette of softened black and cream tones, with earthy accents throughout.

Parker said that the "Noah" is an extremely well-thought-out and well-designed floor plan that's as functional as it is beautiful.

"It's got plenty of space upstairs, downstairs and on the main level, to where you don't feel cramped. But at the same time, it still allows you to be a family," Parker said. "The layout allows you to entertain without a lot of hassle or mess, while keeping private places private."

Realtor Kathy Filyaw of Brogdon Properties said the floor plan is even better than a traditional open concept. While



Ideal Home Highlights

- ▶ Soothing colors with accents of nature
- ▶ Entertaining kitchen with scullery
- ▶ Large windows with 360-degree views
- ▶ High quality hardwood floors
- ▶ State-of-the-art technology with command center

it offers plenty of open space, there are also areas that are strategically closed off, like the gorgeous scullery right off the kitchen.

"The scullery is a really cool feature you don't see around here often," said Parker. "Everything inside our Ideal Home looks very different than anything you see on a regular basis," Parker said.

The beautiful, open kitchen is equipped with a cooktop, double oven, refrigerator, wine tower, dishwasher and sink, as well as additional cabinetry in the scullery and a separate pantry.

"It's an entertaining kitchen that harkens back to another generation," Filyaw said.

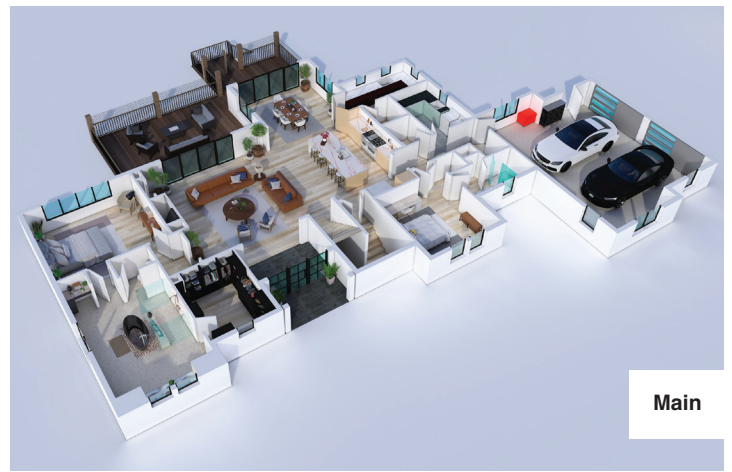
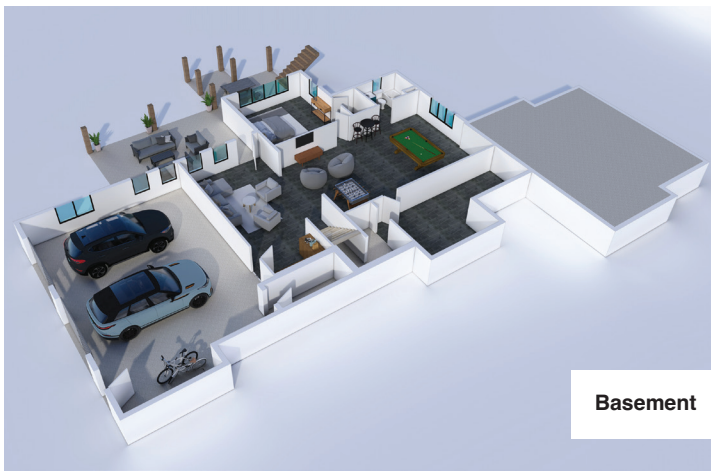
"When you've got the door closed, you don't see the mess behind the scenes," she continued. "You just see the beautiful kitchen, and then you can be as messy as you

want and close it off and not have to worry about the whole world seeing it."

The main-level primary suite is both spacious and private. And as for the en suite bathroom: "It looks like it's straight out of a magazine," Parker said. "I've never seen another bathroom like it."

Complete with a see-through, smoky acrylic soaker tub, floating vanity and suspended mirrors, the bathroom has a spacious, spa-like feel. There is a huge look-through shower as well as completely customized his-and-hers closets. These closets, as well as the pantry and all secondary closets in the home, have high quality organization systems by Space Cadets.

Upstairs are three additional bedrooms, a children's



lounge, ample attic storage and two bathrooms, including a diagonal Jack-and-Jill bathroom with a double vanity.

The entire house is equipped with state-of-the-art technological features including home security, home automation and entertainment. From the home's command center or a phone app, owners will be able to lock doors, turn off lights, check security cameras and play music.

FULLY FINISHED DAYLIGHT BASEMENT

Filyaw mentioned the importance of "aging in place" for all generations and demographics. This home is set up with a full basement that has a no-stair entry, a kitchenette, bedroom, bathroom, living and dining area. There is also a basement-level storm shelter.

"The finished basement is perfect if you have an older parent that comes to stay with you, or even a child who has graduated from college and hasn't found a job yet – or any situation where you might have someone who needs to live with you or stays with you for a while who needs privacy," she said. "And because it's a daylight basement, it doesn't feel like a basement at all. It feels like a third level to a house. There are lots of windows and backyard access, so it really feels like just another level."

OUTDOOR LIVING AT ITS BEST

The setting of the Ideal Home is as spectacular as the home itself. It's built on the side of a mountain with breathtaking views, yet still offers ample flat yard space. While steep lots sometimes require a sacrifice of a good yard, B&K Build put a lot of emphasis on making sure the yard was done right.

"We did a lot extra to provide a really huge backyard for entertaining and family," Parker said. "It feels like you're on the top of a mountain, but not like you're hanging off of a cliff."

Parker said he hopes seeing the outcome of this fabulous yard will help to give people a vision of what can be achieved in a neighborhood that is on a mountain.

The Ideal Home has two large decks: one covered and one uncovered. The uncovered deck has a large accordion

door that opens onto the deck to fully create an indoor/outdoor space between the living room and back porch. The secondary outdoor space underneath provides an additional opportunity to enjoy views of the mountain scenery and well-landscaped backyard.

"There is a nice, flat backyard that would be absolutely perfect for an outdoor fire pit, gazebo or garden," Filyaw said. "You could even install a pool."

The gorgeous front yard sits up high, with a beautiful rock retaining wall and scenic view of Oak Mountain.

The Ideal Home's landscape was designed by Denise Obert and installed by Forrest's Lawn & Landscape, Inc.

ABOUT THE HIGHLANDS

The Highlands Community is proud to be the location of the 2024 Ideal Home.

The Highlands is a North Shelby County gem. Neighborhood amenities include two gated entrances, miles of walking trails, two stocked lakes, two pavilions, a community pool and a playground.

The Highlands consists of 722 total acres spanning the cities of Chelsea and Pelham. This includes 217 acres of untouched woodlands. There are currently 250 home sites planned for the area. This is a low-density community intended for the enjoyment of nature.

"It's like going to the mountains or living in the mountains in Birmingham," Parker said. "The Highlands is a really neat neighborhood."

Parker and his business partner, Khalid Arafah, have built several custom homes in The Highlands, with plans for more in the future.

CUSTOM HOMES BY B&K BUILD

Parker and Arafah are longtime friends who are living out their dream of owning their own construction business.

After working in home renovation, Parker earned his builder's license in 2014 and spent several years working for a local developer. A master multi-tasker, Parker runs the day-to-day operations. Arafah puts his MBA to good use handling the finances and contract documents for B&K



Upstairs

For more information on building your dream home, please contact:

Brandon Parker
205-999-5939
bp.bkbuild@gmail.com

Kathy Filyaw
205-278-2602
kfilyaw@brogdonproperties.com



Build. They are proud to work as a team to provide the highest level of customer service for their clients.

“What sets our homes apart at B&K Build is the level of detail that we put into the finishes, the amount of communication that we have with our clients on the front end to make sure that they are getting everything that they want,” Arafah said. “Also, our subcontractors. We have a solid team and that allows our finances and our scheduling to stay on point.”

Parker said a highlight of a custom building project is seeing his clients’ satisfaction with the final product.

“I love seeing people happy and being able to achieve things they didn’t realize could be done,” Parker said. “When you’re building custom, you’re doing something different and special. It’s one of one. The most rewarding part for me is seeing all the pieces come together to create something that’s never been done before.”

Visit bk-build.com or thehighlandscountry.com to learn more.

When You Want Flooring Done Right!

Special financing available. See store for details.



LuxeCraft | Refined Forest, Sugar Cane Herringbone



Elevate your floor decor with the sophisticated designs and remarkable quality of Karastan flooring. Choose from their beautiful carpet, amazing vinyls or the elegant BelleLuxe wood collection.



BelleLuxe | Chevreaux Oak, Bleached

It all starts with the flooring. let our experts help you find the best for your home.

ISSIS & SONS

carpet, rugs and hard surfaces

www.issisandsons.com • issisfurniture.com • instagram #issisfurniture

2858 Hwy. 31 South | 2815 Greystone Commercial Blvd.

Pelham, AL 35124

Birmingham, AL 35242

(205) 663-2310

(205) 981-2311

WHO'S WHO in Birmingham Home Building

Take this opportunity to read about our homebuilders in the event



ADAMS HOMES
adamshomes.com

In 1991, founder Wayne Adams drew from over a decade of homebuilding experience to begin serving homebuyers in Pensacola, Florida. Throughout the 1990s and early 2000s, the company grew into markets throughout Florida, Alabama, and Mississippi. Since 2005, Adams Homes has expanded into markets in North Carolina, South Carolina, Georgia, and most recently, our Lonestar Region in Texas. Beyond simply building houses, we like to create win-win situations for our team members, craftsmen, and our clients. Our Core Principles rest upon the foundation set by Wayne Adams and are the pillars of our growth and continued success. Our Mission is to deliver value to our customers through a straightforward approach to building quality new homes. This approach has positioned Adams Homes as a distinguished leading new home builder throughout the Southeastern United States. In the last three decades of business, our team has built and sold over 50,000 homes across

28 individual divisions – all with the shared goal – “Value, Simplified.”

HOMES 2, 3



B & K BUILD
bk-build.com

Since high school, Brandon Parker and Khalid Arafah have dreamed of owning their own construction business. Brandon is the home builder and is the responsible contractor at B & K Build. A master of multi-tasking and building extensive networks of quality partners. Brandon started his first full-time job in the construction field at 21 and completed his builder’s license in 2014. Khalid is responsible for the finances and contract documents. He has 10 years of experience in the wood-framed construction industry as an engineer supervisor. Khalid is a registered Profession Engineer in 40 states.

HOME 1

BYROM BUILDING

BYROM BUILDING
byrombuilding.com

Marty and Colt Byrom have a rich tradition in the Birmingham home building industry – now, 4 generations of builders. The craft and experience that has been passed down over the years, combined with their passion for people is what has made Byrom Building a staple in the building industry for over almost 50 years. Byrom specializes in custom homes and commercial office buildings in the Greater Birmingham Area. Each project is completely custom and different from the last, as they strive to make each project unique and special.

HOME 4



CENTENNIAL HOMES
centennialhomesllc.com

Centennial Homes LLC was formed in 2015 by Alan Howard and Scott Underwood. Prior to forming Centennial Homes, Alan Built over 3800 homes and served as principle for a large homebuilding firm in Birmingham. Previously he owned a custom homebuilding company that created homes in the Greystone, Highland Lakes and Brook Highland neighborhoods in Birmingham. Since 1998, Scott has held a real estate license. For over 20 years he was focused on marketing new homes for builders and was instrumental in the development of operations of the company where Alan served as principle. Alan and Scott have built a great working relationship over the 10 years they worked together. Before

Centennial, Scott formed Prominence Homes in 2013 and has built over 2500 homes. Since 2018, Prominence has focused primarily on building homes for investors for the rental market. Scott was awarded Builder of the Year in 2018 Scott is also on the Board of the Home Builders Association Centennial Homes prides itself on creating timeless, built-to-last home designs. Centennial was selected to build homes at The Preserve in Hoover, Alabama as well as exceptional homes at Smith Lake in Cullman, Alabama and Lake Martin. Centennial Homes LLC has won Gold and Silver Awards from the Greater Birmingham Homebuilders Association and was selected to build the Prestigious Ideal Home in 2021.

HOMES 5, 6



COMPLETE HOME SPECIALTIES
byrombuilding.com

Complete Home Specialties began serving our clients in late 2008. Bob Hopton-Jones (President/Owner) has over 35 years experience in and around the residential construction industry.

He started out on framing crews building quality homes with a well respected home-builder, leading to custom high end build experience, in virtually all phases of new home construction. Moving forward to high-end remodeling, he developed his “hands on” approach to a wide array of projects, only limited by the imagination. From there, Bob gained valuable experience working with kitchen and bath designers installing and finishing cabinetry on a wide variety of homes from simple slabs to multi-million dollar custom homes.

15 years later, Complete Home Specialties works with their team of kitchen and bath designers to bring their plans to reality. The company has added GlassHouse Design's Maggie Glass as the premiere custom kitchen and bath designer and Stacey Bos as their own interior design decorator. They both specialize in interior and exterior design and decor. CHS has become a true turn-key, Design/Build Remodeling entity.

Every project we undertake is personal and unique. It is our core mission to pay attention to every detail and deliver the absolute best results possible through never compromising on the quality of the build, to superior craftsmanship on all finishes. Our remodels are proven to not only add beauty and functionality to your home, but also stand the test of time.

HOME 57



Curtis White Companies, Inc.
Since 1953

CURTIS WHITE COMPANIES

curtiswhitecompanies.com

Curtis White started in the construction business in 1953. Through quality craftsmanship and reliable service, his company has evolved into a leader in the construction industry in Birmingham area and surrounding counties. Curtis's son, Joe, started working with his father as a teenager on the weekends and summers on the jobsites. After graduating college, he joined the company full time. He serves as a Life Director with the National Association of Home Builders as well as the Greater Birmingham Association of Home Builders.

In 2002, his daughter Katie joined the company. Now as a

partner with her father, she assists customers throughout the building process of their new home. She was named Greater Birmingham Association of Home Builders' "Builder of the Year" in 2022 and serves on the Greater Birmingham Association of Home Builders board.

Having built thousands of new homes for over 70 years we know what works. Using the best building techniques and products, we give our customers the most quality, value and service.

HOME 7



EMBASSY HOMES

embassynewhomes.com

We're enormously proud of the homes we've built over the years. Since 2001, we've built many new homes and throughout that time, we've been listening to our customers and learning from them – from insisting on the best workmanship and the highest quality materials. Our expertise blends from custom built homes as well as multi-family homes ranging from 1,300 to 4,500 square feet in several master planned developments. Embassy Homes continues to grow as one of Birmingham's Premier Home Builders with numerous Gold, Silver and Bronze awards in the annual Parade of Homes. In addition, we have recently won an award from the National Association of Home Builders for our design plans.

Here at Embassy Homes, we blend award-winning designs, livable floor plans, and most importantly, quality craftsmanship in every home we build. We also understand that when you're searching for a new home, you also want the perfect location. A place where people will make friends, enjoy family life and take pride in their new home. We are committed to excellence in

everything we do, regardless of the product level or price point. Our dedication to deliver buyers the home of their dreams, along with superior customer satisfaction, is the company's number one priority.

HOMES 8-20



HARRIS DOYLE
HOMES

HARRIS DOYLE HOMES

harrisdoyle.com

Harris Doyle Homes is a leading residential developer and new home builder in the Auburn, Birmingham, Pike Road, and Panama City, Florida areas. Harris Doyle is widely recognized for its energized and progressive team that works diligently to provide a high level of new construction home service to its customers. We specialize in designing and constructing new homes and neighborhoods that fit the unique lifestyles of a diverse customer base. Harris Doyle is a member of Clayton Properties Group, a Berkshire Hathaway Company.

HOMES 21-38



HOMES BY INDIANWOOD

billkinnebrew.com

For Bill Kinnebrew of Indianwood Companies, LLC, custom homebuilding is a multi-decade long legacy of dream homes. Not only is the expert craftsmanship evident in the homes he builds, but also energy effi-

ciency. Over 30 years ago Bill built one of the first Good Cents Homes for Alabama Power, and he continues to build quality homes using top-shelf design techniques that also conserve energy. In recent years Bill has delighted homeowners with new home choices ranging from \$400,000 to \$3 million. Bill Kinnebrew's work can be seen in the intricate details throughout homes he painstakingly crafts. He also collaborates with David Smelcer residential designer to provide the total package of luxury you deserve. He has a wealth of experience leading custom design in places like Liberty Park (Vestavia Hills, Alabama). Bill is also an approved builder with Russel Lands, Inc. in The Ridge on Lake Martin. Currently Bill is the decided builder for Harmony Cove, Lake Martin's newest development. Come and see a truly innovative community providing you with lake access in a cabin style neighborhood.



J. DAVID HOMES

arhomes.com/
builder/j-david-homes-llc

With nearly three decades of experience in homebuilding, David is a proud AR Homes® franchise owner. His career has been highlighted by building residential communities, as well as large scale student housing communities. David graduated from The University of Alabama with a football letterman, an SEC Championship and All-SEC Academic Honors. He and his wife, Jennifer, have three children and live in Birmingham.

HOME 56



KADCO HOMES

kadcohomes.com

KADCO Homes has been building new homes in the Birmingham, Alabama area for over 40 years. Throughout the metro area, we have built hundreds of homes and helped create beautiful communities such as The Cove at Overton, Pumphouse Village, Westminster, Devonshire Estates, and many more.

HOME 59



KD CUSTOM HOMES

kdcustomhomes.com

We build more than your dream home. From concept to closeout, we deliver project clarity, insight and organization so your building experience is stress-free. Our mission is to redefine the construction experience. With our team of high-character, professional and passionate people, our goal is to deliver your dream home with authentic transparency and organization so you can have a great experience that you can count on. We craft homes that look and feel specific to you and your needs. By working hand in hand with you throughout the entire experience, we get your project done right the first time. We build homes that are beautifully built, crafted with care and specific to you. Whether that is a floorplan you found online or a custom plan we create together – we do it all.

HOME 55



LOWDER NEW HOMES

lowdernewhomes.com

Founded in 1956, Lowder New Homes has earned a reputation for customer satisfaction, quality workmanship, and community building for nearly 70 years. Lowder New Homes is part of a large family of companies called The Colonial Company, known throughout the Southeast for its financial strength, organizational strength, and quality products. Family owned and operated, Lowder New Homes is one of the largest homebuilders in the state, but we provide a tailored homebuying and building experience for each and every customer. That's why over 95% of customers would and do recommend us to friends and family.

HOMES 39, 40

MALCHUS CONSTRUCTION

Award winning residential and commercial contractor since 1973. Long-time small business owner with a reputation for integrity in dealing with clients, suppliers, and subcontractors. Results-minded in both professional and organizational work, with a broad range of contacts within the business and political communities both in Alabama and across the nation. Serves on Governmental Affairs Committee for the GBAHB. Worked to develop the Venture for Affordable Housing program. As part of this process, developed cost-saving measures to streamline the construction of homes for first-time buyers and identified local, state, and federal regulations which

created unnecessary obstacles in the process. Received commendation and recognition from President Ronald Reagan's Department of Housing and Urban Development. Represented Birmingham's homebuilders as a National Director for the National Association of Home Builders. Developed contracting business with family's life savings and no formal post-secondary training. Beginning at the age of 17, learned through trial and error, successful strategies for working with subcontractors, clients, regulatory agencies, construction designers and suppliers to produce award-winning single-family homes.

- Named Builder of the Year in 1985 by Greater Birmingham Association of Home Builder's
- Designated winner Birmingham's Parade of Homes competition every year from 1978 to 1988
- Outstanding Young Businessman of the Year and named to the Congress of Outstanding Alabamians in 1984 by the Alabama Jaycees.



MANCHA CONSTRUCTION PARTNERS

Meet the dynamic duo behind Mancha Construction Partners, John Mancha and Daniel Statum! With a passion for crafting dream homes, John and Daniel bring decades of combined experience to the table. As visionary leaders, they strive for excellence in every project, ensuring each home reflects quality craftsmanship, innovation, and unparalleled design. Each home is individually tailored to be one-of-a-kind, by Interiors By Ashley.

HOME 53, 54



SCHOLL CONSTRUCTION

gbrannum.com

As a custom home builder, Bobby Scholl, president of Scholl Construction, Inc. not only strives for excellence in the quality of construction of his homes, but also in superior customer relations. In addition, Bobby employs a highly skilled and experienced foreman (Ronald Fincher) to oversee each home built by Scholl Construction, Inc. Having attained the prestigious status of Master Builder, Bobby exemplifies the highest standards for building professionals associated with this designation.

HOME 41



SIGNATURE HOMES

e-signaturehomes.com

With more than 100 communities and over 10,000 homeowners across Alabama and Tennessee, we are the No. 1 source when it comes to building new homes in Birmingham and in Nashville. We specialize in producing high-quality, minimal-maintenance homes with enduring value for you and your family. You can trust that with Signature Homes, you are choosing the best in the business, and your home will be held to impeccable standards.

HOMES 42-44



SLATE BARGANIER BUILDING

slatebarganier.com

Slate Barganier Building is a custom home builder with offices located in both Birmingham and Lake Martin offering both renovation and new construction services. The company's mission is to understand and accurately execute the vision for each home, and to offer the best quality construction and customer experience possible. The company believes that quality is not just craftsmanship and precision, but also a long lasting relationship with each and every client.

HOME 45



TAYLOR BURTON COMPANY

taylorburton.com

For the last four generations, the Burton family has been building custom homes in the Birmingham and Over-The-Mountain areas.

Taylor Burton Company is dedicated to providing a culture that is built on time-honored principles of hard work, integrity and the uncompromising desire for quality. It is our philosophy to build custom, quality homes as well as renovations and additions that are designed to meet the demands of today's markets and those of the foreseeable future.

In everything we do, we strive to give our clients responsive personal service.

We understand that building a new home or renovation can be an extremely stressful process, and our team will work with

you from the beginning of the project until the end.

Every detail matters to us. And the details are the difference between just building a house and creating a home you and your family will love for years to come. Because it is the little things that matter – from the nails we use to the concrete we pour – to make sure that nothing is overlooked in creating your dream home.

HOMES 46, 47



TOWER HOMES

tower-homes.com

At Tower Homes, our dedicated team of professionals is deeply committed to more than just construction. We believe that with each home built, we hold the opportunity Build A Better Life for our homeowner.

Everyone who buys a new home has the dream of improving their quality of life. At Tower Homes, we are here to help your dream become reality.

With a track record spanning over three decades and the completion of more than 2,000 homes, Tower Homes has established an unparalleled reputation for delivering thoughtfully crafted residences, an unparalleled customer experience, and continued post-sale support. This is one of the many ways Tower Homes is Building Better Lives.

Furthermore, Tower Homes Builds Better Lives through our continuous contributions to faith-based organizations through our corporate tithing program. At Tower Homes, we firmly believe in giving back to organizations that serve the most vulnerable in our community, state, country, and across the world. Over the years, we have donated millions of dollars, making a significant impact locally and globally, to aid those

in need.

We take immense pride in working for Tower Homes and our unwavering commitment to the mission of Building Better Lives. It would be our privilege to assist you in turning your dream into a reality.

HOMES 48, 58



VALOR COMMUNITIES

valorcommunities.com

Each and every home crafted through Valor Communities, a new home builder, comes with experience, care and professionalism. When choosing Valor Communities for your next new home, feel comfortable knowing that your home is built with high-grade materials, beyond the standards of code minimums. Additionally, each home that carries the Valor Communities name also comes with a complete structural warranty backed by the third party company, 2-10 Warranty. Our home designs feature efficiency-of-space™ and industry leading interior detail, the driving force behind the growth for Valor Communities. Space to make your new house a home. That's Built Here.

HOMES 49, 50



WATERSTONE HOMES

waterstonehomes.net

Waterstone Homes, LLC was founded in 2016 and has been serving East Alabama especially St. Clair County and Trussville since that time. Waterstone is

one of the only flat fee cost plus custom builders in Alabama which means "Saving Money." Waterstone does custom homes for families using your plan or we can assist you with plans previously built. By using Waterstone, many families have been able to find land, build their home, and sometimes rent one of Brian's rental homes while they build. The whole building project is a puzzle we can help you solve.

HOME 51



WEDGWORTH CONSTRUCTION

WEDGWORTH CONSTRUCTION

wedgworth.net

Patrick Gilbert, Owner and President of Wedgworth Construction, began with us in 2009. He joined the team as our Superintendent then bought the company in 2019 from our founder, Mike Wedgworth, who was retiring. Patrick has been in the construction industry for over 17 years, working in various fields such as: trim carpentry, remodeling, and new home construction.

His hands-on approach to the building process is what sets him apart from others and sparks his desire to work closely with our Project Manager and Superintendent to deliver a product that surpasses client expectations. Patrick is an Auburn University graduate. Patrick served as the 2023 President for the Greater Birmingham Association of Home Builders, as he desires to stay current with builder trends and industry standards.

HOME 52

WHERE TO GO

Get to know more about our featured communities

RIDGE LANDING

byrombuilding.com/ridge-landing

Ridge Landing is an upscale, age-preferred, residential community by Byrom Building located off Rocky Ridge Road. They have put countless hours of thought into the design of each house-plan, community design, and amenities – all representing their love for building.

Address: Approximately 2925 Old Rocky Ridge Road, Birmingham, AL 35243

HOME 4

THE ENCLAVE AT CEDAR GROVE

embassynewhomes.com

The Enclave at Cedar Grove is a beautiful new community located near the city of Alabaster off of Shelby County 17. It is minutes away from downtown Alabaster and convenient to numerous grocery stores, retail shopping, dining and award winning schools. This is a wonderful community to start a family in or to begin your retirement. The Enclave at Cedar Grove allows you to be minutes away from the city, while maintaining a secluded country feel. This is a new community with 67 available homesites that allow you the option of a patio or basement floor plans starting

in the \$400s. Come see why we are so excited to offer homes in The Enclave at Cedar Grove!

Address: 224 Mayfair Park, Maylene, AL 35114

HOMES 8, 9

CHELSEA PARK

embassynewhomes.com

No longer are amenities like lakes, parks, walking trails and manicured landscaping exclusive to more expensive neighborhoods. Other amenities involve a landscaped entrance with a 100-foot tall clock tower, a park system, playing fields, lakes and an elementary school! When completed Chelsea Park will have 2,500 homes in a variety of distinctive neighborhoods!

Address: 1137 Dunsmore Drive, Chelsea, AL 35043

HOMES 10-16

THE PARC AT LAKE WILBORN

embassynewhomes.com

Experience the joy of living in one of Birmingham's finest communities, The PARC at Lake Wilborn. New homes starting in the \$500s. This wonderfully planned community is offering amenities like no other in Hoover. Explore the

vast walking trails by the river or spend a day lounging by the pool. Just a few amenities include: State-of-the-Art Fitness Center, Community Garden, Grand Lawn, Zero-Entry Pool and Clubhouse, Wiffle Ball Park just to mention a few. The fun never ends at Lake Wilborn.

Address: 2302 Old Gould Run, Hoover, AL 35244

HOMES 17-20

HILLSONG AT MT LAUREL

harrisdoyle.com/communities/birmingham/hillsong-at-mt-laurel

Welcome to Hillsong at Mt Laurel, a new home community in Mt Laurel by Harris Doyle Homes. Hillsong at Mt Laurel will feature 170 new homes and is located between Mt Laurel Elementary School and the Mt Laurel Commercial District. Location is everything for this community as you can easily walk or golf cart to dinner, Piggly Wiggly, the elementary school and more. This new home community is located in the highly sought after Oak Mountain School District and will feature its own amenities including a beautiful pool, clubhouse, pocket parks and sidewalks. Hillsong at Mt Laurel is now selling Phase I.

Address: 4016 Robinson Ave., Birmingham, AL 35242

HOMES 21-23

FOOTHILLS AT BLACKRIDGE

harrisdoyle.com/communities/birmingham/the-foothills-at-blackridge

This new construction community in Hoover will add 227 new homes for sale to the

Birmingham, Alabama area. The established Blackridge community highlights the natural beauty of its surroundings. Enjoy tranquility and leisure in this secluded neighborhood along the Cahaba River. Residents will enjoy a suite of amenities at The Foothills including a pool and pavilion, as well as access to the amenities at neighboring Bradbury at Blackridge including social green areas, outdoor activities, event spaces, amphitheater and stage, a resort-style pool with cabanas, a wiffle ball field, pickleball courts, indoor and outdoor fitness wings, outdoor entertainment space with food truck parking, and a kid's playground. The Foothills at Blackridge is only minutes from Hoover's restaurants and stores! Brock's Gap Brewery is right down the street next to the Finley Center and Hoover Met, plus the Stadium Trace Village. Blackridge is zoned for Hoover Schools. New homes at The Foothills at Blackridge are now selling!

Address: 3004 Blackridge Blvd. S., Birmingham, AL 35244

HOMES 27-29

LONGMEADOW

harrisdoyle.com/communities/birmingham/longmeadow

Longmeadow offers the perfect Trussville community for both families and those looking to embrace a leisurely lifestyle. Conveniently situated near the Chalkville Mountain Road exit off Interstate 59 in Trussville, Longmeadow is directly across from Hewitt-Trussville High School, Trussville Community Center, and athletic fields. This neighborhood is renowned for its first-class amenities, including a clubhouse, swimming pool, and picturesque nature trails. For families with school-age children, it's important to

mention that Longmeadow is within the Trussville School System, with zoning for Paine Elementary, Hewitt-Trussville Middle School, and Hewitt-Trussville High School. Visit Longmeadow today or get in touch with us to discover more about building your new home in Trussville. New homes in Birmingham, Alabama at Longmeadow are selling fast, so seize this opportunity now!

Address: 5745 Longview Trail Trussville, AL 35173

HOMES 30-32

PALMER COVE

harrisdoyle.com/communities/birmingham/palmer-cove

Welcome to Palmer Cove, a new style of living brought to you by Harris Doyle Homes.

These charming homes for sale in Birmingham, Alabama, range from 2-4 bedrooms and are built with affordability in mind, making them perfect for families, roommate living and single-resident households. Located on Alabama 119 across from the Retreat at Greystone and beside Church of the Highlands Greystone Campus, Palmer Cove is in a pristine location and will provide residents with easy access to dining, shopping and entertainment. In this new home community, Harris Doyle will build a total of 64 homes in a village style cul-de-sac setup of four homes per section. The homes range in size from 1,192 to 2,229 square feet and each home will have a private one, two, or three-car garage and fenced back yard. Palmer Cove is zoned for Oak Mountain Schools, one of the best school districts in the state. New homes in Birmingham, Alabama at Palmer Cove are now selling!

Address: 109 Palmer Cove Birmingham, AL 35242

HOMES 24-26

SIMMS LANDING

harrisdoyle.com/communities/birmingham/simms-landing

Welcome to Simms Landing, a new construction community built by Harris Doyle Homes and located just outside of Birmingham, Alabama in Pelham. This master-planned new home community has all the amenities of a larger neighborhood while maintaining a charming small-town feel. Highlighting the list of amenities are a swimming pool, pavilion and an onsite fitness center, but it's the dense forest and rolling hills surrounding the property that truly make this communi-

ty an oasis. Simms Landing is zoned for the highly sought-after Pelham School System, ranked by Niche.com as the No. 6 public school district in the state for 2020. Located only 20 miles south of downtown Birmingham and conveniently located by Interstate 65 and U.S. Route 31, you won't have to go far to be right in the middle of great shopping and entertainment. Seconds down the road, you will find a Publix-anchored shopping center with many popular shops and restaurant spots adjacent to it. Or drive a few more minutes and visit the Colonial Promenade Shopping Center, featuring roughly 1,000,000 square feet of shops and restaurants, making it the largest shopping center in Shelby County. If you're a fan of tennis, the world-class Pelham Racquet Club, home to the largest public clay court facility in the state, is only about a mile away. Or if hiking



When you decide it is time to remodel, let our decades of experience guide the way through the Design/Build process.

Limited only to the imagination.
Uncompromising standards.
Distinctively yours.



205.834.0233
completehomespecialties.com

and mountain biking are more your speed, Oak Mountain State Park is just a few miles up the road. The 940-acre state park is well-equipped with hiking and mountain biking trails as well as lake swimming, golfing, fishing, camping, and water sports that can mostly be enjoyed year-round. The fun doesn't stop there, though! The Oak Mountain Amphitheatre is adjacent to the State Park and features live concerts by some of music's biggest artists. Unparalleled convenience, amenities and affordability make Simms Landing an easy choice for your next home; a place where you can experience Life Well Crafted. New homes in Birmingham, Alabama at Simms Landing are now selling!

Address: 5032 Simms Ridge Pelham, AL 35124

HOMES 33-35

THE BRAY AT LIBERTY PARK

harrisdoyle.com/communities/birmingham/the-bray-at-liberty-park

Welcome to The Bray at Liberty Park, a new 700-acre Town Village that will offer a town green, pedestrian walkways, and an impressive selection of shopping and dining – including On Tap Sports Café, Publix, and Anytime Fitness. Located in Vestavia Hills, Alabama, and only 10 miles from downtown Birmingham. Liberty Park's amenities are sprinkled throughout the grounds, making every location a great one! From the community basketball courts, tennis center, parks, playgrounds, and sidewalks, the neighborhood offers a close-knit community filled with activity. Liberty Park is zoned for the Vestavia Hills school system, which is ranked within the Top 10 school systems in Alabama. Two of the district's schools – Vestavia Hills

Elementary and Liberty Park Middle schools – are conveniently located within the community, allowing students to easily walk or ride their bikes to and from school.

Address: 1196 Talus Road Vestavia Hills, AL 35243

HOMES 36-38

HARMONY COVE COTTAGES

paigepatterson.com/harmony-cove

Welcome to Harmony Cove! Here is your opportunity – on the pond, and across the road from Lake Martin. Gorgeous construction by master builder Bill Kinnebrew. Harmony Cove Cottages (Phase 3) is the newest development in the Harmony Cove neighborhood boasts a boat ramp and community boat slips, a common firepit area and boat trailer storage. Short-term rentals allowed. Across the pond from Harmony Cove Camp, which was featured in last year's Parade of Homes.

Address: 970 Indian Campground Road, Eclectic, AL 36024

VESTAVIA TERRACE TOWNHOMES

kadcohomes.com

Vestavia Terrace Townhomes is an upscale new development in the heart of Vestavia Hills. The energy efficient homes offer an abundance of main level living including Master suites, garages, and covered porches with fenced-in backyards. With stainless steel appliances featuring gas cooking, quartz countertops, beautiful painted cabinetry, wide plank hardwood floors, and custom millwork details, these homes have a lot to offer! An affordable price

point for a high quality, brand new Vestavia home!

Address: 3038 Massey Road Vestavia Hills, AL 35216

WOODRUFF COTTAGES

kadcohomes.com

Welcome to the Rocky Ridge area's newest neighborhood, Woodruff Cottages! This fabulous gated community will feature 20 charming homes with Master suites on the main level, two car garages, brick and natural cedar exteriors, and open concept floor plans. Lush yet low maintenance landscaping with irrigation. Modern finishes and design aspects set these homes apart from what is currently on the market. Live walking distance to the quaint shops and restaurants at Rocky Ridge and the beautiful McCallum Park without paying the high city taxes, the best of both worlds! Come experience the wonderful lifestyle Woodruff Cottages has to offer!

Address: 2468 Rocky Ridge Road, Birmingham, AL 35243

MOUNTAIN TOP ESTATES

malchusrealestate.com

Mountain Top Estates is a community, situated just minutes from the Deerfoot Parkway exit, offering a faster than average commute time to Birmingham proper. We sit just minutes from the Publix Shopping Center, the Trussville Entertainment District, Paine Elementary and the nationally ranked Hewitt-Trussville High School. There are 28 estate sized lots in Mountain Top, each offering its own unique and beautiful vista. Mountain Top Estates offers seclusion and privacy, while being served by the finest fire and police

protection in the country. The subdivision is powered by Alabama Power and Trussville Gas and Water; there will be no sewer fees. Additionally, Mountain Top sits right across U.S. 11 from the city of Trussville's newest acquisition: Glendale Farms. The hundreds of acres acquired further expands the city's footprint and will benefit the citizens in numerous ways. Some current benefits include a senior citizen center, a community center, a walking track and fitness center, offering group classes, a community theater, a pool and dog park, access to the Cahaba River, and a sports complex and library.

Address: 7548 Mountain Top Circle, Trussville, AL 35173

THE VILLAGE AT SPRINGVILLE

waterstonehomes.net

The Village at Springville Community offers a rural countryside getaway for those trying to escape from the hustle and bustle of City Life. This nestled community has the best of both worlds with its scenic tranquil countryside living and its conveniences like the Walmart Supercenter and Interstate 59, exit 156 about 2 miles away! This community is within the Springville School system and has no HOA fees. This small quaint community of custom built luxury homes is the right size in keeping these desired living amenities intact. With only a few new home opportunities left for this unique opportunity of country quiet and serene living, the time is limited for now! All you need is now.

Address: 210 Cottage Court, Springville, AL 35146

HOME 51



THE TRAILS

AT THE VILLAGE

STRESS-FREE LAKEFRONT LIVING

The Trails is the newest waterfront enclave in The Village at Lake Martin. With HOA-managed perks like lawn care and on-site trash disposal, residents can spend their time enjoying the other amenities like swimming pools, nature trails, a fitness center and community boat ramp. Dedicated boat slips are available for purchase.

WATERFRONT & WATER-ACCESS
HOMESITES

Starting in the mid - \$400,000s

For info, contact **Kira Woodall**
at **256.625.1714**
VILLAGETRAILSLAKEMARTIN.COM

Visit our participating homes in the
2024 Parade of Homes



SB SLATE
BARGANIER
BUILDING

Lake Martin Realty
A RUSSELL LANDIS COMPANY

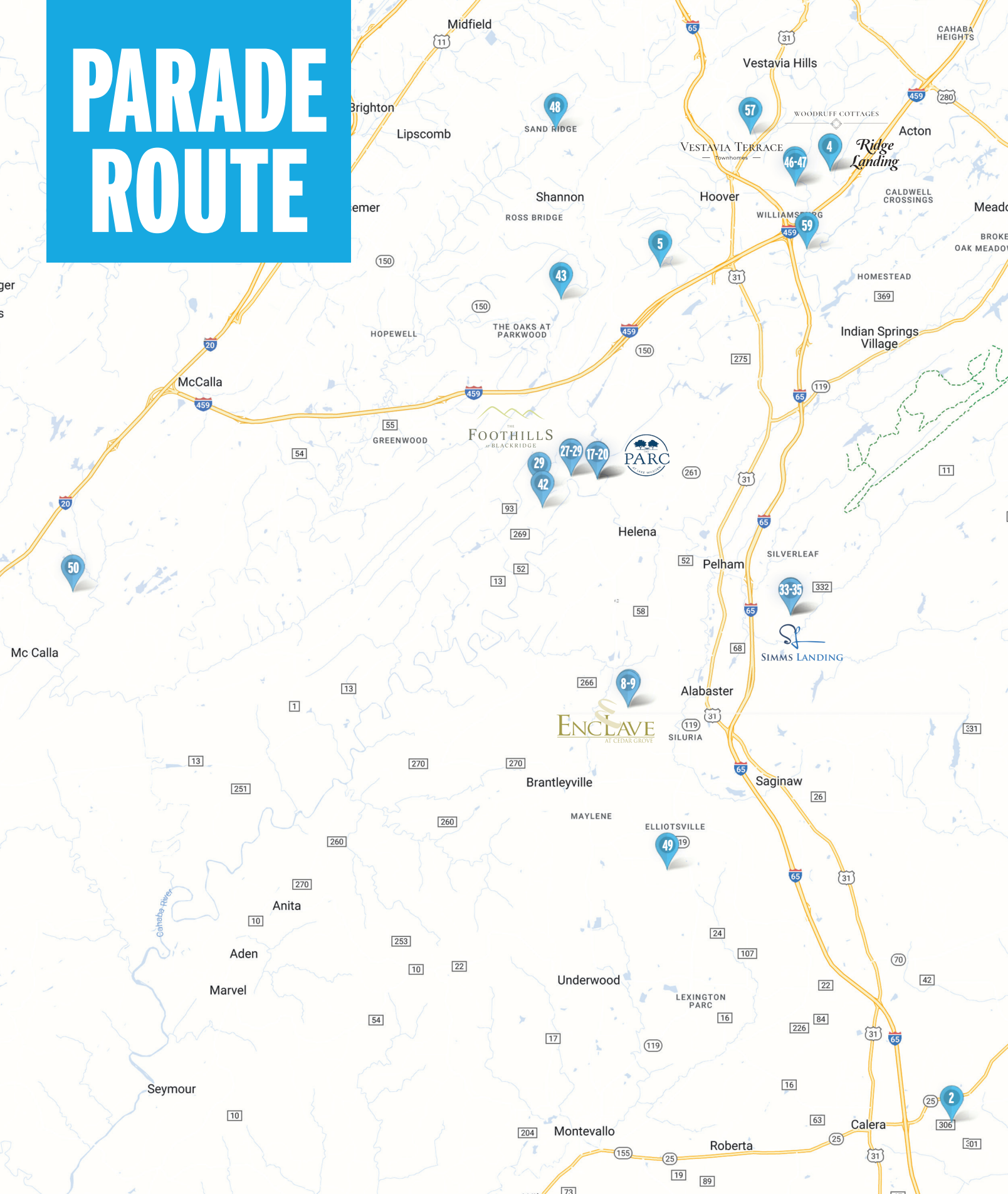


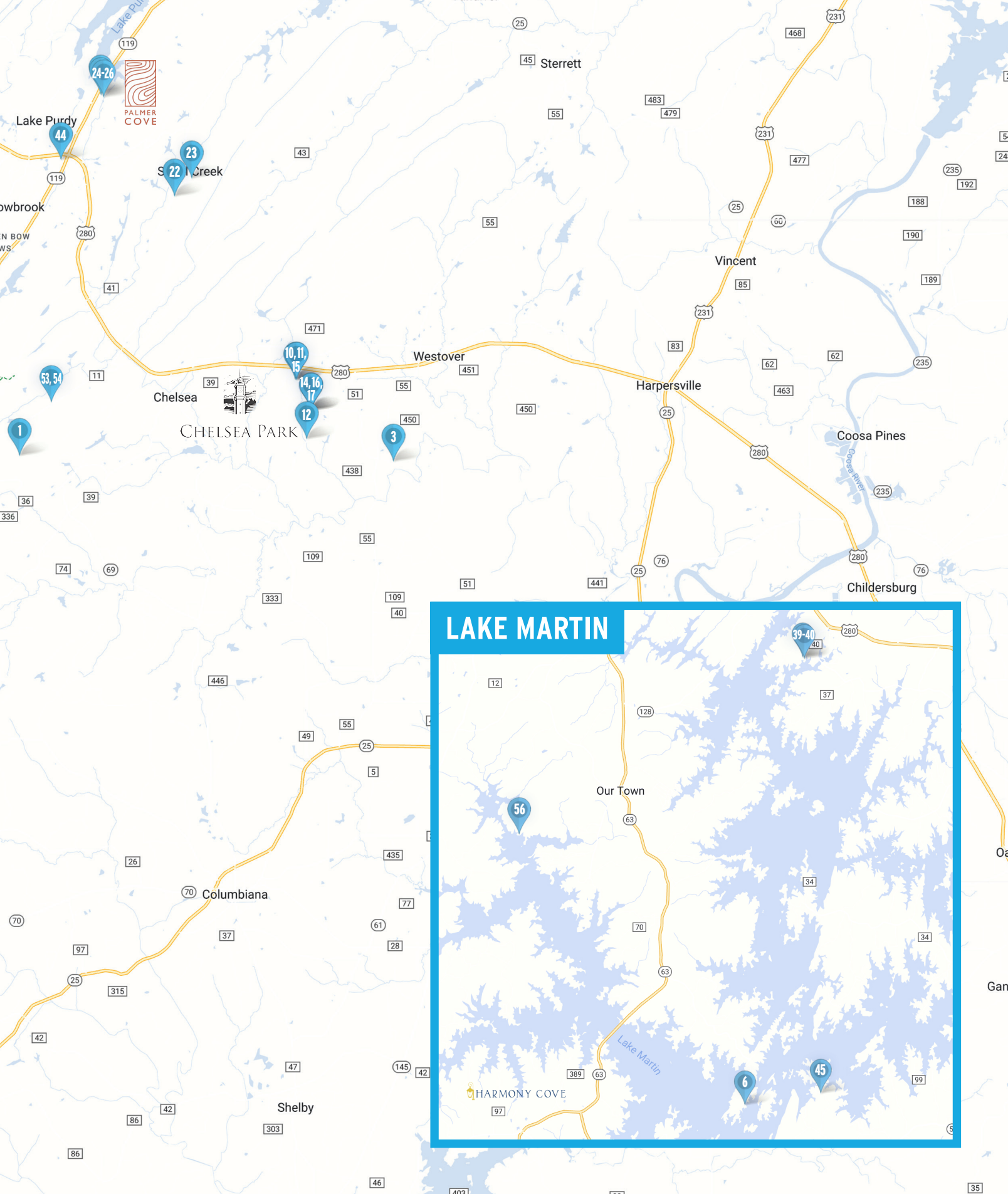
PARADE ROUTE





PARADE ROUTE





LAKE MARTIN

Index of Homes

1 Ideal Home 2024

2079 Lindsay Lane, Chelsea
Community: The Highlands
B&K Build

2 1930 Plan

100 Pure Leaf Drive, Wilsonville
Community: Yellow Leaf Farms
Adams Homes

3 1717

2060 Turquoise Lane, Calera
Community: Emerald Ridge
Adams Homes

4 Ridge Landing Retreat

3167 Landing Lane, Birmingham
Community: Ridge Landing
Byrom Building

5 Rosemary's Villa

544 Preserve Way, Hoover
Community: The Preserve
Centennial Homes

6 Serenity Cove

135 East Ridge Court, Alexander City
Community: The Ridge
Centennial Homes

7 The Rowan

6920 Timber Trail Road, Leeds
Community: Cedar Rock Farms
Curtis White Companies

8 Ashby A

317 Cornwall Drive, Maylene
Community: The Enclave at
Cedar Grove
Embassy Homes

9 Kylie B

305 Cornwall Drive, Maylene
Community: The Enclave at
Cedar Grove
Embassy Homes

10 Aden B

1140 Dunsmore Drive, Chelsea
Community: Chelsea Park
Embassy Homes

11 Dalton C

1137 Dunsmore Drive, Chelsea
Community: Chelsea Park
Embassy Homes

12 Fairview

1273 Chelsea Park Trail, Chelsea
Community: Chelsea Park
Embassy Homes

13 Abbey 5B SLG

867 Chelsea Park Road, Chelsea
Community: Chelsea Park
Embassy Homes

14 Belmont B

875 Chelsea Park Road, Chelsea
Community: Chelsea Park
Embassy Homes

15 Rockingham 3C1B

1126 Dunsmore Drive, Chelsea
Community: Chelsea Park
Embassy Homes

16 Wynne 3C1 BW

871 Chelsea Park Road, Chelsea
Community: Chelsea Park
Embassy Homes

17 Abbey 5A

2416 Murphy Pass, Hoover
Community: The PARC
at Lake Wilborn
Embassy Homes

18 Camden A

2413 Murphy Pass, Hoover
Community: The PARC
at Lake Wilborn
Embassy Homes

19 Landry B

2437 Murphy Pass, Hoover
Community: The PARC
at Lake Wilborn
Embassy Homes

20 Rockingham 3C1A SLG

2421 Murphy Pass, Hoover
Community: The PARC
at Lake Wilborn
Embassy Homes

21 Model Home

4016 Robinson Ave., Birmingham
Community: Hillsong at
Mt Laurel
Harris Doyle Homes

22 The Iris

4008 Robinson Ave.,
Birmingham
Community: Hillsong at
Mt Laurel
Harris Doyle Homes

23 The Foxglove

701 South Olmsted St.,
Birmingham
Community: Hillsong at
Mt Laurel
Harris Doyle Homes

24 Model Home

109 Palmer Cove, Birmingham
Community: Palmer Cove
Harris Doyle Homes

25 The Merion

452 Couples Drive, Birmingham
Community: Palmer Cove
Harris Doyle Homes

26 The Oakmont

536 Feherty Way, Birmingham
Community: Palmer Cove
Harris Doyle Homes

27 Model Home

3004 Blackridge Blvd. S., Hoover
Community: Foothills at
Blackridge
Harris Doyle Homes

28 The Millbrook

3029 Blackridge Blvd. S., Hoover
Community: Foothills at
Blackridge
Harris Doyle Homes

29 The Logan

4004 Martin Brook Circle, Hoover
Community: Foothills at
Blackridge
Harris Doyle Homes

30 Model Home

5745 Longview Trail, Trussville
Community: Longmeadow
Harris Doyle Homes

31 The Alyssa

5990 Longmeadow Drive,
Trussville
Community: Longmeadow
Harris Doyle Homes

32 The Millbrook

5986 Longmeadow Drive,
Trussville
Community: Longmeadow
Harris Doyle Homes

33 Model Home

5032 Simms Ridge, Pelham
Community: Simms Landing
Harris Doyle Homes

34 The Jefferson

5056 Simms Ridge, Pelham
Community: Simms Landing
Harris Doyle Homes



BUILDING ESSENTIALS

- DOORS
- WALLPAPER
- WINDOWS
- SIDING
- FLOORING
- STAIR PARTS
- MOULDING
- & MUCH MORE

NOW OPEN!

1716 28TH AVE S, HOMEWOOD, AL 35209

205.864.8226

WEBBBUILDINGESSENTIALS.COM

SHOWROOM OPEN WEEKDAYS, 9-5

A DIVISION OF WEBB CONCRETE & BUILDING MATERIALS

35 The Franklin

5048 Simms Ridge, Pelham
Community: Simms Landing
Harris Doyle Homes

36 Model Home

1196 Talus Road
Community: The Bray at
Liberty Park
Harris Doyle Homes

37 The Fazio

3422 Feldspar Circle
Community: The Bray at
Liberty Park
Harris Doyle Homes

38 The Pate

3548 Brayfield Lane
Community: The Bray at
Liberty Park
Harris Doyle Homes

39 The Contender

555 Transom Drive,
Jacksons' Gap
Community: White Oak Landing
Lowder New Homes

40 The Shellcracker

541 Transom Drive,
Jacksons' Gap
Community: White Oak Landing
Lowder New Homes

41 Highland Park Cottage

2801 10th Ave. S., Birmingham
Community: Highland/Lakeview
Historic District
Scholl Construction

42 The Roswell

1005 Clifton Road, Hoover
Community: Bradbury at
Blackridge
Signature Homes

43 The Wilton

4865 Silas Ave., Hoover
Community: Everlee
Signature Homes

44 The Foster

1002 Windsor Drive, Hoover
Community: Windsor Court
Signature Homes

45 Model Home

46 Village Parkway, Dadeville
Community: The Trails at the
Village at Lake Martin
Slate Barganier Building

46 Sunny Side

3316 Southbend Circle,
Vestavia Hills
Community: Southbend
Taylor Burton Company

47 Yin and Yang

3301 Southbend Circle,
Vestavia Hills
Community: Southbend
Taylor Burton Company

48 The Hallman

3938 Sydney Drive, Birmingham
Community: The Grand
Tower Homes

49 Rosemary III

397 Wynlake Drive, Alabaster
Community: Wynlake
Valor Communities

50 Cahaba

6856 Tyler Chase Drive, McCalla
Community: Tyler Chase
Valor Communities

51 Surrey

210 Cottage Court, Springville
Community: The Village at
Springville
Waterstone Homes

52 The Emory

3775 Crosby Drive, Vestavia Hills
Community: Cahaba Heights
**Wedgworth Construction
Company**

53 The Leo Plan

304 Timberview Trail, Chelsea
Community: The Highlands
**Mancha Construction
Partners**

54 The Mancha

337 Timberview Trail, Chelsea
Community: The Highlands
**Mancha Construction
Partners**

55 The Brookside

1576 Forest Ridge Road,
Homewood
Community: Forest Ridge
KD Custom Homes

56 The Wynhurst

51 Pitchford Court,
Alexander City
Community: The Willows
J. David Homes

Remodeling

57 Lapaglia Residence

2832 Vestavia Forest Drive,
Vestavia Hills
Community: Vestavia Hills
Complete Home Specialties

Build to Rent

58 Magnolia

4090 Red Rock Place, Irondale
Community: The Heights
Tower Homes

59 The Reese

4301 Lennox Court, Birmingham
Community: Lennox
KADCO

1 Ideal Home 2024

THE HIGHLANDS

2079 Lindsay Lane, Chelsea
BEDS: 5 / BATHS: 4.5 / SQ FT: 5,278



B&K Build
Brandon Parker
205-999-5939
bp.bkbuild@gmail.com
bk-build.com



2 1930 Plan

YELLOW LEAF FARMS

100 Pure Leaf Drive, Wilsonville
BEDS: 4 / BATHS: 2 / SQ FT: 1,930



Adams Homes
Leslie Holsombeck
205-620-1173
lholsombeck@adamshomes.com
adamshomes.com



3 1717

EMERALD RIDGE

2060 Turquoise Lane, Calera
BEDS: 3 / BATHS: 2 / SQ FT: 1,717



Adams Homes
Leslie Holsombeck
205-620-1173
lholsombeck@adamshomes.com
adamshomes.com



4 Ridge Landing Retreat

RIDGE LANDING

3167 Landing Lane, Birmingham
BEDS: 5 / BATHS: 3 / SQ FT: 2,754



Byrom Building
Colt Byrom
205-980-7424
coltbyrom@gmail.com
byrombuilding.com

**BYROM
BUILDING**

5 Rosemary's Villa

THE PRESERVE

544 Preserve Way, Hoover
BEDS: 5 / BATHS: 4.5 / SQ FT: 3,320



Centennial Homes

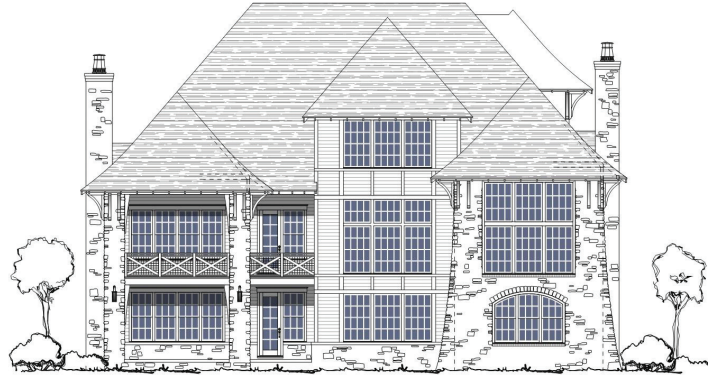
Scott Underwood
205-965-3631
sunderwood3631@gmail.com
centennialhomesllc.com



6 Serenity Cove

THE RIDGE

135 East Ridge Court, Alexander City
BEDS: 5 / BATHS: 2 / SQ FT: 5,480



Centennial Homes

Scott Underwood
205-965-3631
sunderwood3631@gmail.com
centennialhomesllc.com



7 The Rowan

CEDAR ROCK FARMS

6920 Timber Trail Road, Leeds
BEDS: 3 / BATHS: 3.5 / SQ FT: 2,627



Curtis White Companies

Katie McLaughlin
205-699-2283
katie@curtiswhitecompanies.com
curtiswhitecompanies.com



8 Ashby A

THE ENCLAVE AT CEDAR GROVE

317 Cornwall Drive, Maylene
BEDS: 4 / BATHS: 3 / SQ FT: 2,627



Embassy Homes

Bryan Cobb
205-949-5529
bcobb@embassyhomebuilders.com
embassynewhomes.com



9

Kylie B

THE ENCLAVE AT CEDAR GROVE

305 Cornwall Drive, Maylene
BEDS: 5 / BATHS: 3.5 / SQ FT: 3,019



Embassy Homes

Bryan Cobb

205-949-5529

bcobb@embassyhomebuilders.com

embassynewhomes.com

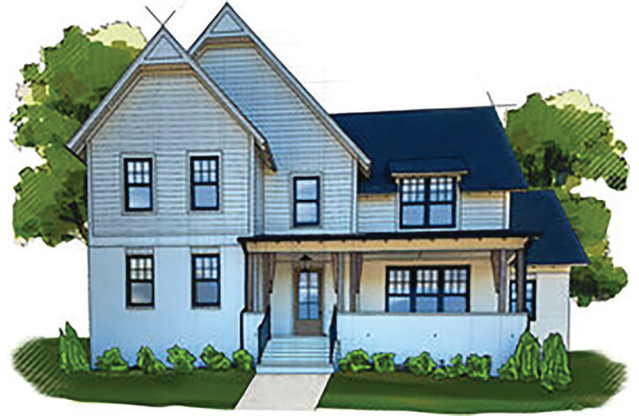


10

Aden B

CHELSEA PARK

1140 Dunsmore Drive, Chelsea
BEDS: 5 / BATHS: 3.5 / SQ FT: 3,500



Embassy Homes

Bryan Cobb

205-949-5529

bcobb@embassyhomebuilders.com

embassynewhomes.com



A Strong Foundation.

Whether you're planning to build, remodel, or purchase a home, begin with solid financial support. Our experienced local bankers provide expert advice with custom-built construction, mortgage, and home equity loan solutions. For your next home project, rely on our strength.



RIVERBANKANDTRUST.COM

Equal Housing Lender Member FDIC NMLS 405629

1425 Montgomery Hwy, Suite 151, Vestavia Hills | 205.588.0500

11

Dalton C

CHELSEA PARK

1137 Dunsmore Drive, Chelsea
BEDS: 4 / BATHS: 3 / SQ FT: 2,978



Embassy Homes

Bryan Cobb

205-949-5529

bcobb@embassyhomebuilders.com

embassynewhomes.com



12

Fairview

CHELSEA PARK

1273 Chelsea Park Trail, Chelsea
BEDS: 4 / BATHS: 3 / SQ FT: 2,769



Embassy Homes

Bryan Cobb

205-949-5529

bcobb@embassyhomebuilders.com

embassynewhomes.com



13

Abbey 5B SLG

CHELSEA PARK

867 Chelsea Park Road, Chelsea
BEDS: 5 / BATHS: 4.5 / SQ FT: 3,718



Embassy Homes

Bryan Cobb

205-949-5529

bcobb@embassyhomebuilders.com

embassynewhomes.com



14

Belmont B

CHELSEA PARK

875 Chelsea Park Road, Chelsea
BEDS: 4 / BATHS: 3 / SQ FT: 2,132



Embassy Homes

Bryan Cobb

205-949-5529

bcobb@embassyhomebuilders.com

embassynewhomes.com



15 Rockingham 3C1B

CHELSEA PARK

1126 Dunsmore Drive, Chelsea
BEDS: 4 / BATHS: 3.5 / SQ FT: 3,008



Embassy Homes

Bryan Cobb
205-949-5529
bcobb@embassyhomebuilders.com
embassynewhomes.com



16 Wynne 3C1 BW

CHELSEA PARK

871 Chelsea Park Road, Chelsea
BEDS: 5 / BATHS: 5 / SQ FT: 3,604



Embassy Homes

Bryan Cobb
205-949-5529
bcobb@embassyhomebuilders.com
embassynewhomes.com



Images shown are artistic renderings for illustrative purposes only.

Sales & Marketing By



Ingram
AND ASSOCIATES
ingramnewhomes.com

Private presentations available by appointment.

Morgan Walls
(205) 218-4764
Petra Pryor
(205) 616-5900

Only
6
Remain



Maiden Heights is an *exclusive enclave of eleven Brownstones, Villas, and Manors* reminiscent of the nostalgic residences that elegantly line the streets of New York and Boston. With its blend of classic architecture and timeless craftsmanship, *each distinctive floor plan offers a unique lifestyle and sense of place.*

These sophisticated homes will all offer 10-foot ceilings, hardwoods throughout, gourmet kitchens with Wolf and Sub-Zero appliances, thoughtful and spacious living spaces, fireplaces, private garages wired for car charging, outdoor living with covered porches and rooftop terraces, and beautifully landscaped and lit outdoor common areas.

Luxury Townhomes

MOVE IN SPRING 2024 | Starting at \$999,000

The Height of New Living In the Heart of **Highland Park**

Convenient to theater, parks, fine dining and more, **Maiden Heights** is an elevated life of new views... new ideas... new connections.

1235 23rd Street South

maidenheights.com

17

Abbey 5A

THE PARC AT LAKE WILBORN

2416 Murphy Pass, Hoover
BEDS: 5 / BATHS: 4.5 / SQ FT: 3,830



Embassy Homes

Bryan Cobb

205-949-5529

bcobb@embassyhomebuilders.com

embassynewhomes.com



18

Camden A

THE PARC AT LAKE WILBORN

2413 Murphy Pass, Hoover
BEDS: 4 / BATHS: 3.5 / SQ FT: 3,050



Embassy Homes

Bryan Cobb

205-949-5529

bcobb@embassyhomebuilders.com

embassynewhomes.com



19

Landry B

THE PARC AT LAKE WILBORN

2437 Murphy Pass, Hoover
BEDS: 3 / BATHS: 2 / SQ FT: 2,200



Embassy Homes

Bryan Cobb

205-949-5529

bcobb@embassyhomebuilders.com

embassynewhomes.com



20 Rockingham 3C1A SLG

THE PARC AT LAKE WILBORN

2421 Murphy Pass, Hoover
BEDS: 5 / BATHS: 4.5 / SQ FT: 3,344



Embassy Homes

Bryan Cobb

205-949-5529

bcobb@embassyhomebuilders.com

embassynewhomes.com



21

Model Home

HILLSONG AT MT LAUREL

4016 Robinson Ave., Birmingham
BEDS: 4 / BATHS: 3 / SQ FT: 2,953



Harris Doyle Homes
Eric Crocker
205-475-1662
eric.crocker@harrisdoyle.com
harrisdoyle.com



HARRIS DOYLE
HOMES

22

The Iris

HILLSONG AT MT LAUREL

4008 Robinson Ave., Birmingham
BEDS: 4 / BATHS: 3 / SQ FT: 2,719



Harris Doyle Homes
Eric Crocker
205-475-1662
eric.crocker@harrisdoyle.com
harrisdoyle.com



HARRIS DOYLE
HOMES

Plumbing • Gas • Backflow • Remodels • New Construction

The Neighborhood Plumber

“Don’t call a stranger. Call a neighbor!”



**Mention this ad
for 10% OFF!**

\$20 max discount given. Not to be combined with any other discount or coupons.

205-663-0612

After Hours Service Available

theneighborhoodplumberinc@gmail.com • theneighborhoodplumber.com

Like THE NP on Facebook for Info, Promotion & Giveaways!



23

The Foxglove

HILLSONG AT MT LAUREL

701 South Olmsted St., Birmingham
BEDS: 3 / BATHS: 2 / SQ FT: 2,030



Harris Doyle Homes
Eric Crocker
205-475-1662
eric.crocker@harrisdoyle.com
harrisdoyle.com



24

Model Home

PALMER COVE

109 Palmer Cove, Birmingham
BEDS: 3 / BATHS: 2.5 / SQ FT: 1,869



Harris Doyle Homes
Eric Crocker
205-475-1662
eric.crocker@harrisdoyle.com
harrisdoyle.com



25

The Merion

PALMER COVE

452 Couples Drive, Birmingham
BEDS: 3 / BATHS: 2.5 / SQ FT: 1,869



Harris Doyle Homes
Eric Crocker
205-475-1662
eric.crocker@harrisdoyle.com
harrisdoyle.com



26

The Oakmont

PALMER COVE

536 Feherty Way, Birmingham
BEDS: 3 / BATHS: 3.5 / SQ FT: 1,943



Harris Doyle Homes
Eric Crocker
205-475-1662
eric.crocker@harrisdoyle.com
harrisdoyle.com



27

Model Home

FOOTHILLS AT BLACKRIDGE

3004 Blackridge Blvd. S., Hoover
BEDS: 4 / BATHS: 3 / SQ FT: 3,153



Harris Doyle Homes
Eric Crocker
205-475-1662
eric.crocker@harrisdoyle.com
harrisdoyle.com



28

The Millbrook

FOOTHILLS AT BLACKRIDGE

3029 Blackridge Blvd. S., Hoover
BEDS: 3 / BATHS: 2 / SQ FT: 2,280



Harris Doyle Homes
Eric Crocker
205-475-1662
eric.crocker@harrisdoyle.com
harrisdoyle.com



BEING THE BEST AT WHAT WE DO EVERYDAY...

Making Dreams Come True, One Home at a Time

BIRMINGHAM

MOUNTAIN BROOK

2871 Acton Road Suite 200
Birmingham, AL 35243
Office: (205) 969-3334

2231 20th Avenue S Ste 205
Birmingham, AL 35223
Office: (205) 948-1740



www.1stfedmortgage.com



It's Possible™ to fall in love with your home again.

Discover personalized colors, textures and designs, with long-lasting climate-resilient siding, trim and soffit.

© 2024 James Hardie Building Products Inc. All Rights Reserved. AD2201

Siding | Trim | Soffit



jameshardie.com

29

The Logan

FOOTHILLS AT BLACKRIDGE

4004 Martin Brook Circle, Hoover
BEDS: 4 / BATHS: 3.5 / SQ FT: 3,153



Harris Doyle Homes
Eric Crocker
205-475-1662
eric.crocker@harrisdoyle.com
harrisdoyle.com



30

Model Home

LONGMEADOW

5745 Longview Trail, Trussville
BEDS: 3 / BATHS: 2 / SQ FT: 1,633



Harris Doyle Homes
Eric Crocker
205-475-1662
eric.crocker@harrisdoyle.com
harrisdoyle.com



31

The Alyssa

LONGMEADOW

5990 Longmeadow Drive, Trussville
BEDS: 4 / BATHS: 3 / SQ FT: 3,172



Harris Doyle Homes
Eric Crocker
205-475-1662
eric.crocker@harrisdoyle.com
harrisdoyle.com



32

The Millbrook

LONGMEADOW

5986 Longmeadow Drive, Trussville
BEDS: 3 / BATHS: 2 / SQ FT: 2,262



Harris Doyle Homes
Eric Crocker
205-475-1662
eric.crocker@harrisdoyle.com
harrisdoyle.com



33

Model Home

SIMMS LANDING

5032 Simms Ridge, Pelham
BEDS: 4 / BATHS: 2 / SQ FT: 2,752



Harris Doyle Homes
Eric Crocker
205-475-1662
eric.crocker@harrisdoyle.com
harrisdoyle.com



HARRIS DOYLE
HOMES

34

The Jefferson

SIMMS LANDING

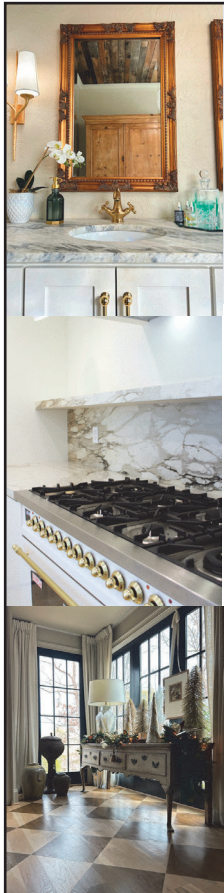
5056 Simms Ridge, Pelham
BEDS: 4 / BATHS: 3 / SQ FT: 2,850



Harris Doyle Homes
Eric Crocker
205-475-1662
eric.crocker@harrisdoyle.com
harrisdoyle.com



HARRIS DOYLE
HOMES



Specialty

Elevate your space with our comprehensive range of services! From flooring and tile to countertops and beyond.

Explore our vast selection of over 200 slabs in our warehouse, ensuring you'll find the perfect match for your project. Plus, take advantage of our cutting-edge 3D services, including scanning and schematic floor plans, to bring your vision to life with precision. To accommodate your busy schedule, we offer Saturday appointments for added convenience.

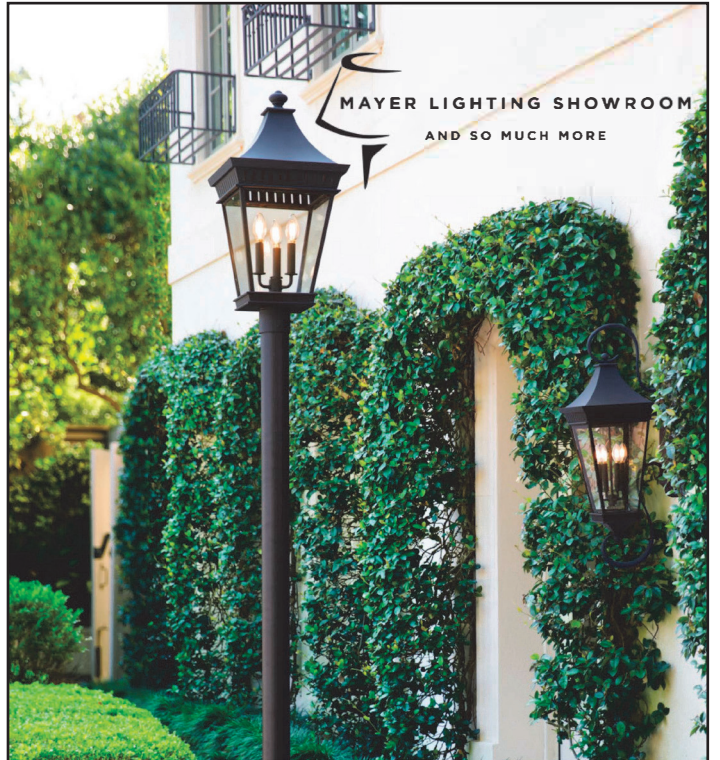
Experience unparalleled service and quality craftsmanship with us. Your dream space awaits!

Maranatha Stone & Floors

140 Commerce Ct.
Pelham, AL 35124



☎ 205.663.0400
✉ contact@maranatha.pro



MAYER LIGHTING SHOWROOM
AND SO MUCH MORE

HINKLEY

Traditional style offers classic, elegant lines to create a warm, inviting atmosphere.

Birmingham · Dothan · Pelham
MAYERLIGHTING.COM | @MAYERLIGHTINGSHOWROOM

35

The Franklin

SIMMS LANDING

5048 Simms Ridge, Pelham
BEDS: 4 / BATHS: 2 / SQ FT: 2,752



Harris Doyle Homes
Eric Crocker
205-475-1662
eric.crocker@harrisdoyle.com
harrisdoyle.com



36

Model Home

THE BRAY AT LIBERTY PARK

1196 Talus Road, Vestavia Hills
BEDS: 3 / BATHS: 2.5 / SQ FT: 2,254



Harris Doyle Homes
Eric Crocker
205-475-1662
eric.crocker@harrisdoyle.com
harrisdoyle.com



37

The Fazio

THE BRAY AT LIBERTY PARK

3422 Feldspar Circle, Vestavia Hills
BEDS: 3 / BATHS: 3.5 / SQ FT: 2,038



Harris Doyle Homes
Eric Crocker
205-475-1662
eric.crocker@harrisdoyle.com
harrisdoyle.com



38

The Pate

THE BRAY AT LIBERTY PARK

3548 Brayfield Lane, Vestavia Hills
BEDS: 3.5 / BATHS: 3 / SQ FT: 2,177



Harris Doyle Homes
Eric Crocker
205-475-1662
eric.crocker@harrisdoyle.com
harrisdoyle.com



39

The Contender

WHITE OAK LANDING

555 Transom Drive, Jacksons' Gap
BEDS: 4 / BATHS: 3.5 / SQ FT: 2,688



Lowder New Homes
Bradshaw Tyson
334-270-6506
btyson@lowdernewhomes.com
lowdernewhomes.com

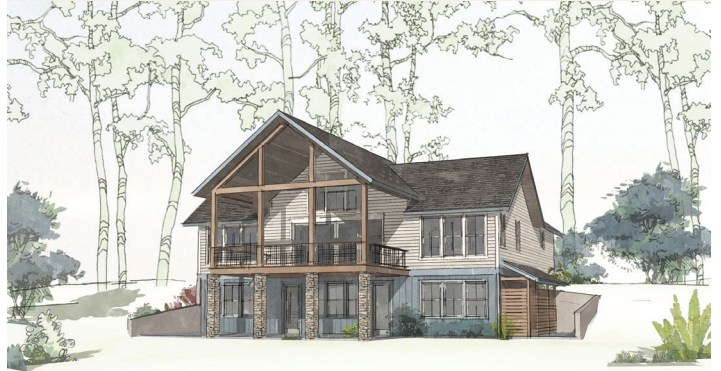


40

The Shellcracker

WHITE OAK LANDING

541 Transom Drive, Jacksons' Gap
BEDS: 4 / BATHS: 4 / SQ FT: 2,692



Lowder New Homes
Bradshaw Tyson
334-270-6506
btyson@lowdernewhomes.com
lowdernewhomes.com



41 Highland Park Cottage

HIGHLAND/LAKEVIEW HISTORIC DISTRICT

2801 10th Ave. S., Birmingham
BEDS: 4 / BATHS: 4.5 / SQ FT: 4,351



Scholl Construction
Bobby Scholl
205-368-1369
bobby@schollinc.com
schollconstruction.net



42

The Roswell

BRADBURY AT BLACKRIDGE

1005 Clifton Road, Hoover
BEDS: 5 / BATHS: 5 / SQ FT: 3,459



Signature Homes
Garret Henderson
205-769-5825
ghenderson@e-signaturehomes.com
e-signaturehomes.com



43

The Wilton

EVERLEE

4865 Silas Ave., Hoover
BEDS: 4 / BATHS: 4 / SQ FT: 2,601



Signature Homes
Garret Henderson
205-769-5825
ghenderson@e-signaturehomes.com
e-signaturehomes.com



44

The Foster

WINDSOR COURT

1002 Windsor Drive, Hoover
BEDS: 2 / BATHS: 3 / SQ FT: 1,433



Signature Homes
Garret Henderson
205-769-5825
ghenderson@e-signaturehomes.com
e-signaturehomes.com



45

Cumberland

THE TRAILS AT THE VILLAGE AT LAKE MARTIN

46 Village Parkway, Dadeville
BEDS: 4 / BATHS: 3 / SQ FT: 1,732



Slate Barganier Building
Cameron Eaton
205-637-3373
cameron@slatebarganier.com
slatebarganier.com



46

Sunny Side

SOUTHBEND

3316 Southbend Circle, Vestavia Hills
BEDS: 4 / BATHS: 3.5 / SQ FT: 3,840



Taylor Burton Company
Daniell Burton
205-822-7936
daniell@taylorburton.com
taylorburton.com



47

Yin and Yang

SOUTHBEND

3301 Southbend Circle, Vestavia Hills
BEDS: 4 / BATHS: 3 / SQ FT: 3,500



Taylor Burton Company
Daniell Burton
205-822-7936
daniell@taylorburton.com
taylorburton.com



TAYLOR BURTON
COMPANY, INC.

48

The Hallman

THE GRAND

3938 Sydney Drive, Birmingham
BEDS: 3 / BATHS: 2 / SQ FT: 2,040



Tower Homes
Sandy Reeves
205-365-3298
sandy@tower-homes.com
tower-homes.com



TAYLOR BURTON
COMPANY, INC.

49

Rosemary III

WYNLAKE

397 Wynlake Drive, Alabaster
BEDS: 6 / BATHS: 5.5 / SQ FT: 4,777



Valor Communities
Nicole Ortiz
205-255-3555
nicole@valorcommunities.com
valorcommunities.com



50

Cahaba

TYLER CHASE

6856 Tyler Chase Drive, McCalla
BEDS: 5 / BATHS: 4 / SQ FT: 3,149



Valor Communities
Nicole Ortiz
205-255-3555
nicole@valorcommunities.com
valorcommunities.com

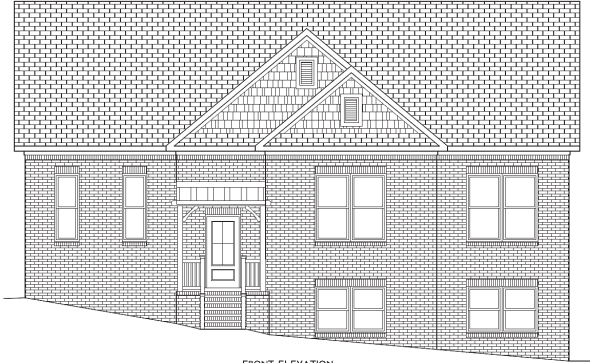


51

Surrey

THE VILLAGE AT SPRINGVILLE

210 Cottage Court, Springville
BEDS: 3 / BATHS: 3 / SQ FT: 2,086



FRONT ELEVATION

Waterstone Homes
Brian Camp
205-369-7154
robert.brian.camp@gmail.com
waterstonehomes.net



52

The Emory

CAHABA HEIGHTS

3775 Crosby Drive, Vestavia Hills
BEDS: 4 / BATHS: 4 / SQ FT: 3,288



Wedgworth Construction Company
Patty Leeming
205-379-6052
patty@wedgworth.net
wedgworth.net



53

The Leo Plan

THE HIGHLANDS

304 Timberview Trail, Chelsea
BEDS: 5 / BATHS: 3.5 / SQ FT: 3,283



Mancha Construction Partners
Daniel Statum
205-283-7939
daniel@mcpllc.com



54

The Mancha

THE HIGHLANDS

337 Timberview Trail, Chelsea
BEDS: 6 / BATHS: 6 / SQ FT: 6,617



Mancha Construction Partners
Daniel Statum
205-283-7939
daniel@mcpllc.com



55

The Brookside

FOREST RIDGE

1576 Forest Ridge Road, Homewood
BEDS: 4 / BATHS: 2.5 / SQ FT: 2,300



KD Custom Homes
Robby Pruitt
205-436-6367
robby@kdcustomhomes.com
kdcustomhomes.com



56

The Wynhurst

THE WILLOWS

51 Pitchford Court, Alexander City
BEDS: 4 / BATHS: 4.5 / SQ FT: 4,836



J. David Homes
Mary Kathryn Bonamy
855-532-8431
mkbonamy@arhomes.com
arhomes.com/builder/j-david-homes-llc



Lakefront Cottage Living

NEW HOMES DESIGNED FOR LAKE LIFE

A collection of attractively priced, turn-key lakefront cottages. With nine cottage-style plans to choose from, the large, wooded, waterfront homesites are conveniently located on the north end of Lake Martin offering easy access to Highway 280, golf, dining, shopping, marina and medical care.

MODEL HOMES **LOWER**
now under construction by **NEW-HOMES**



FOR INFO, CALL **DAMON STORY** AT 205.789.9526
WHITEOAKLANDINGLM.COM

**WHITE
OAK
LANDING**

Visit our participating homes in the
2024 Parade of Homes

35 minutes from Auburn • 75 minutes from Birmingham



Remodeling

57 Lapaglia Residence

VESTAVIA HILLS

2832 Vestavia Forest Drive
BEDS: 4 / BATHS: 3 / SQ FT: 3,040

The kitchen of David and Danielle Lapaglia in Vestavia Hills needed a complete redesign and gut job. Upon entering, we had to remove the old tile entry way and replace it with new hardwood flooring that we matched as we resurfaced and stained all the hardwoods throughout the house. Custom flush wood grates covered the vents. The living room area had existing beams that started at 84 1/2" AFF and increase at an angle to 10' high. They had a small breakfast area between the living space and the kitchen, a very long rectangle. The dining area and kitchen had lower ceiling heights of around 95" and the kitchen had bead board on the ceiling. All of this was removed to show the exposed attic, and the beams in the living room were duplicated and matched throughout both spaces. The existing beams had structural issues that we addressed and repaired, and a decorative PUD was placed at the base of every beam. There is constant asymmetry throughout the space to deal with. We duplicated the space of the beams until we reached kitchen cabinetry, and then adjusted to be asymmetrical throughout the remaining space. They chose a furniture base wood hood that also had to have an additional piece at the top so it would angle and match the beams.

They had 2 sets of French doors and 1 large window in the center of them. We changed both sets of doors to large windows and replaced the large window with one set of French doors. This meant we had to redo the existing brick and weave in new brick to replace what we removed on the outside in the screened in patio area. The brick was an odd size and difficult to match so they were hand cut and then painted to match the remaining brick. The entire section of the home had to have new electrical and the plumbing and electrical had to be moved to new locations for the kitchen HVAC had to be moved for the new cooktop location. Selected cabinets were lit up with glass inserts, all new cabinetry, pantries, double oven tower, under counter microwave, under counter beverage cooler, new countertop button mount garbage disposal, all new Cafe' appliances installed. Backsplash features a beautiful hand painted marble tile as well as 4x12 vintage wave tile for the remaining areas. Satin bronze hardware and light fixtures are featured. Cabinetry is Shiloh and Aspect with a paint and stain combination, on maple.

All new interior doors, back door to garage, new paint throughout hall and 4 connecting rooms, new can lighting with dimmers, trim work, new insulation.

This was a special remodel for Danielle. She had a hard upbringing and did without a lot. She and her husband David have sacrificed and helped others so often, and never did much for themselves. This is their time for their family. It was truly a pleasure to help and serve them. CHS can do a great remodel but the greatest things we build, are relationships.



Complete Home Specialties

Bob Hopton-Jones

205-834-0233

completehomespecialtiesllc@gmail.com

completehomespecialties.com



Build to Rent

58

Magnolia

THE HEIGHTS

4090 Red Rock Place, Irondale
BEDS: 2 / BATHS: 2.5 / SQ FT: 1,318



Tower Homes

Jessica Cox
205-896-1410
jessica@tower-homes.com
leasetheheights.com



59

The Reese

LENNOX

4301 Lennox Court, Birmingham
BEDS: 2 / BATHS: 2 / SQ FT: 1,211



KADCO

Maggie Gruber
205-985-7171, ext 2
liveatlennox@gmail.com
liveatlennox.com



Serving Birmingham and
Surrounding Communities for 29 Years.



205-621-6259
oakmountaincabinetry.com
139 Corporate Way
Pelham, AL 35124

GEORGE HUDSON
FOREST HUDSON

THANK YOU TO OUR 2024

IDEAL SPONSORS





When the details matter, We'll Do It

WDI Enterprises, LLC

Construction and Renovations

205-460-1537

General Construction
Interior and Exterior Painting
Renovations
Remodels
Landscaping
and Hardscaping
Gutters
Roofs

Serving the Over the Mountain Area



Call us for a FREE quote 205-460-1537
or visit us online at wdial.com

COME EXPERIENCE

A NEW TYPE OF SHOWROOM AT



ALABAMA APPLIANCE

Alabama Appliance has offered traditional appliances locally and online for 17 years, and we recently expanded our Irondale location to include a "live" luxury showroom.

Come test out any of our high-end appliances including Sub-Zero, JennAir, Café, Miele, Thermador and more. Turn on the faucets, fire up the stove and see exactly how Alabama Appliance can add that luxury touch to your home.

OPENING
MAY 1st

SUB-ZERO

JENNAIR

C A F É

Miele

Thermador★



7956 Crestwood Blvd., Irondale, AL
205-777-5154
alabamaappliance.com

