

2025 GREATER BIRMINGHAM
PARADE *OF*
HOMES



APRIL 25-27 & MAY 2-4

— birminghamparadeofhomes.com —

BUSINESS BANKING | MORTGAGE | PERSONAL BANKING

Clarity before closing.



Buying a home can be overwhelming. With a mortgage professional sitting down with you, walking you through every detail and helping you understand the entire process, you can buy with confidence. It might not be what you expect from a bank, but it's certainly what you can expect from us. **Banking Beyond Expectation.**



JOHNNY SHUNNARAH

VP, Mortgage Loan Officer
Johnny.Shunnarah@bryantmortgage.com
(205) 733-7578 | NMLS 186580



LISA ZEIG

VP, Mortgage Loan Officer
Lisa.Zeig@bryantmortgage.com
205-968-3342 | NMLS 2089044



DONNIE WYATT

VP, Mortgage Loan Officer
Donnie.Wyatt@bryantmortgage.com
(205) 733-7562 | NMLS 457102

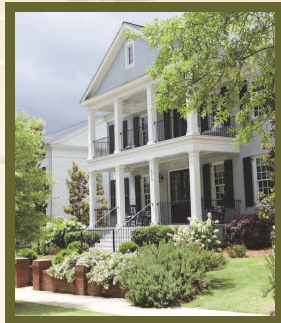
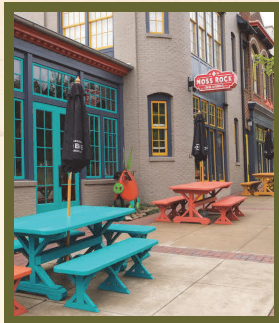
NMLS 582857

CRESTLINE VILLAGE | CAHABA VILLAGE | COLUMBIANA | GREYSTONE | HOMEWOOD
HOOVER | TRUSSVILLE | **BRYANTBANK.COM**



Find Community Here

AT THE PRESERVE IN HOOVER



NEW HOMES AVAILABLE NOW

Looking for luxury living in a well-established and welcoming neighborhood? The Preserve is the perfect place to find your dream home in a community that is rooted deep in Southern charm. The Preserve is surrounded by hundreds of acres of woodlands, filled with unique amenities, and is conveniently located only moments away from Central Alabama's shopping and entertainment hot spots.

Reach out to learn more about making The Preserve YOUR new community.

CONTACT US
hooverpreserve.com
(205) 822-9348



Scan For Community Information And
Homes Available Now At The Preserve



TABLE OF CONTENTS

06 | WELCOME LETTER

WELCOME FROM OUR CHAIR

08 | IDEAL HOME

PRESENTED BY MANCHA CONSTRUCTION PARTNERS

16 | NEIGHBORHOOD OF DREAMS

PRESENTED BY SIGNATURE HOMES

16 | WHO'S WHO

MEET OUR BUILDERS

20 | WHERE TO GO

COMMUNITIES IN THE PARADE

24 | PARADE ROUTE

MAPS TO FIND YOUR WAY

28 | PARADE OF HOMES

VIEW THE HOMES IN THE PARADE

54 | IDEAL HOME SPONSORS

THANK YOU TO OUR SPONSORS

THANK YOU TO OUR ADVERTISERS

AllSouth Appliance (41)
Art House Creative (5)
Bloomin Blinds (37)
BPS Partners, LLC (7)
Bryant Bank (2)
Cajun Roux Bar and Grill (43)
CB&S Bank (39)
Centennial Homes (17)
Clearview Strategy Partners (49)
Clement Homes (48)
CR Home of Alabama, Inc (48)
Donovan Builders, LLC (35)
First Federal Mortgage (31)
Greater Birmingham
Association of Home Builders (11)
Home Builders Association of Alabama (56)
Homes by Indianwood (23)
Issis & Sons (47)
J. Wright Building Company |
Wright Building Company (19)
Jasmine Burch, Keller Williams Realty (6)
Mayer Lighting Showroom (41)
Michelle Creamer, ARC Realty (31)
Oak Mountain Cabinetry Inc (43)
Outdoor Living Solutions Birmingham (49)
ProLift Garage Door (30)
ProSource of Birmingham (21)
RealtySouth (3)
Regions Bank (33)
River Bank & Trust (47)
Solar Reflections, LLC (43)
Steel City Realty Group /
Chris Burdette & Laura Davis (29)
Team Elevator LLC (6, 43)
V&W Supply Co. (30)
Weathertech (53)
Webb Concrete & Building Materials (38)

PUBLISHED FOR:

Greater Birmingham
Association of Home Builders
2401 International Park Place, Ste 200
Hoover, AL 35243
P: 205-912-7000
birminghamparadeofhomes.com

FOR ADVERTISING, PLEASE CONTACT:

Dan Starnes at dan@starnesmedia.com

STARNES
MEDIA



PUBLISHED BY:

Starnes Media
1833 27th Ave S.
Homewood, AL 35209
P: 205-313-1780
www.starnesmedia.com

Starnes Media produces six monthly newspapers in the Birmingham metro area: 280 Living, Cahaba Sun (Trussville), Homewood Star, Hoover Sun, Vestavia Voice and Village Living (Mountain Brook). Starnes Media also produces chamber membership directories, quality-of-life magazines and business marketing materials. Starnes Media. All rights reserved. Reproduction or use of editorial or graphic content without prior permission is prohibited.

ART HOUSE, BROKERED BY REALTYSOUTH

HOW A BUYER'S AGENT ADDS VALUE TO YOUR NEW HOME PURCHASE

➔ Choosing the Right Neighborhood



Not all communities, floor plans and lots are created equal. Some appreciate in value more than others.

A buyer's agent helps you make a smart investment, not just an emotional purchase.

➔ Reviewing Design Selections



It's easy to get carried away at the design center but not every upgrade will add value to your home.

A buyer's agent helps you prioritize selections that will boost resale value while keeping you from overspending on features that won't.

➔ Navigating the Construction Process



Having an experienced professional by your side can make all the difference in ensuring a smooth and successful home-building experience.

With 25 years of experience in new construction, I don't just help you sign the contract—I help you navigate the entire build process. That includes:

- Understanding the construction timeline and what to expect at each phase.
- Attending builder walk-throughs to ensure everything is accounted for.
- Identifying potential issues early so they can be addressed before move-in.
- Helping resolve inevitable challenges like construction delays or workmanship questions.

The Bottom Line

Buying new construction and building is exciting and also a major financial decision. Without expert guidance, you could face unexpected costs or unfavorable outcomes. An experienced new construction buyer's agent ensures you choose the right neighborhood, lot, and floorplan for you.

Ready to Build? Let's talk!

Roxanne Hale
Associate Broker
205.352.7742
Shop all Birmingham New Homes

QR code

RealtySouth

WHAT IS A NEW CONSTRUCTION BUYER'S AGENT

AND DO YOU EVEN NEED ONE?

By Roxanne Hale

Buying a brand-new home sounds simple, right? You walk into a model home, pick out your dream floor plan, sign some papers, and boom—you're building! But if you've ever actually gone through the process, you know there is more to it. There can be a lot to navigate! That's where I come in.

I'm **Roxanne Hale, with the Art House Team brokered by RealtySouth**, and I specialize in helping buyers navigate the complex world of new construction. With 25 years of experience in real estate—including extensive work with builders in Alabama—I've seen it all. Many people assume they don't need a buyer's agent when purchasing a brand new home. After all, there's a sales agent in the model home ready to assist. But here's the deal—that agent is duty-bound to represent the builder. If you want someone in your corner looking out for you, **a buyer's agent is essential**. Let's talk about why.

Understanding Build Contracts

One of the biggest misconceptions in new construction is that the contracts are just like standard real estate contracts. They're not. Build contracts are detailed and complex. If you don't know what you're looking at, you might unknowingly agree to terms that aren't right for you. I've reviewed thousands of these contracts, I know what to look for. A buyer's agent helps you **understand exactly what you're signing**.

Sorting Through Neighborhoods, Floorplans, and Lots

Buying a new construction home is exciting, and having a buyer's agent ensures you make top-notch purchase decisions. They help you find upcoming communities and choose the best floor plan and lot for resale value and your long-term needs. Not all lots or floor plans are created equal, and an expert can help you avoid costly mistakes. They also follow the build process and help to keep all parties informed on critical timelines. Best of all, the **builder typically pays a buyer agent's commission**—so, with me, you get expert guidance at no extra cost!

soldbyarthouse.com

Welcome



his year, my committee and I are looking to build upon the storied history of the Parade of Homes by adding new features to the single largest building industry event. This lineup of residences is the best of the best – it's a testament to the fact that we've got some of the most talented, hardest-working builders in the country right here in Birmingham.

The Parade's 2025 Ideal Home, located at 2381 Blackridge Drive in Hoover's Blackridge community, is a singular gem that showcases the peak of luxury, location, and design. Developed by Mancha ConstructionPartners, the 2025 Ideal Home is an oasis that marries the best of lakefront living with suburban convenience. Its unique peninsula lot provides stunning views with direct access to the water on the property's east, west, and south sides.

In addition to the Ideal Home, we're proud to unveil a first for the Parade: the 2025 Neighborhood of Dreams. Developed by Signature Homes, the Neighborhood of Dreams is a collection of three communities, including Primrose at Everlee, Sage Park at Everlee, and Bradbury Crest at Blackridge. These developments epitomize active, resort-style living with walkable, interconnected amenities and close proximity to shopping, dining, and fun.

Along with Mancha and Signature's contributions, the building and remodeling industry's top craftsmanship will be represented in the 2025 Parade lineup. The event will carry forward last year's expansion into build-to-rent and remodeled properties. Remodeling entries will be on display exclusively online.

Participating Parade residences will be open to the public April 25-27 and May 2-4. Doors will be open from 10 a.m. to 6 p.m. each Friday and Saturday of the event and from noon to 6 p.m. on Sundays. I encourage visitors to visit birminghamparadeofhomes.com and @BhamParadeofHomes on Facebook to make the most of their time on the Parade.



Jason Hale

2025 Parade of Homes Chair

PARADE ^{OF} HOMES



Jasmine Burch
REALTOR®

205.709.6812
jasmineburch@kw.com
jasmineburch.kw.com

KELLER WILLIAMS® METRO NORTH
651 MAIN STREET, STE. 119, GARDENDALE, AL 35071
Each office is independently owned and operated



**We Keep
You Moving.**

Team Elevator, LLC
BIRMINGHAM • MONTGOMERY • HUNTSVILLE

205-252-0912
teamelevator.net





New Construction in Vestavia Hills

■ 3 Bedroom Townhomes

■ Walking distance to Cahaba Heights Shopping District

■ Open Floor Plans

■ Minutes from the Summit, I-65, & Downtown

■ Modern Fixtures & Finishes

■ Vestavia Hills Schools

■ 3164 Bellwood Drive

■ Call for More Info: 205-822-7936

OVER 30 YEARS OF BUILDING EXPERIENCE
~BPS PARTNERS, LLC~



2381 Blackridge Drive, Hoover

2025 Ideal Home

Presented by Mancha Construction Partners



For generations, many Americans have enjoyed vacationing at luxurious, high-end resorts, and they adore being pampered with gorgeous accommodations, top-quality amenities, and lush outdoor spaces, including pools, saunas, and spas.

That trend has become a growing part of the U.S. housing market in recent years – especially the market for luxury, custom-built homes.

Many buyers want to enjoy resort-style primary suites, chef-quality kitchens, and other special features without leaving their houses.

That trend will be on display in spectacular fashion at the Ideal Home in the 2025 Parade of Homes, presented by the Greater Birmingham Association of Home Builders from April 25-27 and May 2-4.

The Ideal Home for 2025 is a stunning, two-story, truly custom residence from Mancha Construction Partners, built on a prestigious 1.42-acre peninsula lot in Hoover's beautiful Blackridge neighborhood. This must-see home has five bedrooms and six bathrooms.

Frusterio Design Inc. was the architect, with interior design by Ashley Cagle in collaboration with Ashley Statum at Interiors by Ashley. The home is presented by Christopher Burdette, team leader of the Steel City Realty Group at Keller Williams.

Measuring over 6,500 square feet, this residence offers a perfect blend of luxury and functionality, making it an ideal haven for both relaxation and entertainment, and it provides great views of the 100-acre lake at Blackridge.

"It's a magnificent personal home built in the style of a luxury resort," Burdette says.

A BEAUTIFUL, MUST-SEE HOME

Inside, you'll find an expansive open floor plan – called the Sunset Peninsula – that seamlessly integrates indoor and outdoor living, with windows throughout.

The grand living area features high ceilings and large windows that flood the space with natural light, showcasing breathtaking views of the custom pool designed specifically for entertaining.



All the Details

- The Ideal Home for 2025 is located at **2381 Blackridge Drive** in Hoover.
- To learn about the builders, visit **mcpllc.com**
- For more about interior designer Ashley Statum, visit **interiorsbyashley.net**.

Throughout the home, you will find top-of-the-line design selections, reflecting modern elegance and attention to detail. With its impressive layout and luxurious amenities, this custom build represents the pinnacle of upscale living in the sought-after Blackridge community.

The home's many cool areas include an office space on the main level off the garage.

At the corner of the office, large sliding glass doors open completely, letting the outside in and providing a stunning, unbroken view of the lake.

"That's a very unique, awesome design on that room," Burdette says.

A CHEF'S DREAM

Like the rest of this magnificent home, the main kitchen has an open floor plan, making it perfect for dining and entertaining guests.

The homeowner will also enjoy an elegant, one-of-a-kind scullery kitchen off the main kitchen.

The scullery kitchen is "a chef's dream," Burdette says,

equipped with high-end appliances, ample counter space, and custom cabinetry that makes meal preparation a delight.

Scullery kitchens, or back kitchens, are becoming very popular in high-end homes, as homeowners seek extra storage and workspace while keeping the main kitchen clean and organized.

"It means that you don't have to put everything out in your main kitchen area," Burdette says. "You do your cooking privately."

The thoughtful open design in the kitchen extends to the dining area, which accommodates both intimate family dinners and larger gatherings.

AWESOME PRIMARY SUITE

Ascending to the upper levels, you'll find additional living spaces that enhance the home's versatility.

The home boasts two enormous master closets in the primary bedroom, providing exceptional storage and organization.

The his and hers closets in the primary suite are massive and super elegant – "One of a kind in Hoover and probably in the Birmingham area," Burdette says.

There is also floor-to-ceiling tile throughout the primary bathroom.

LUXURIOUS OUTDOOR SPACES

This outdoor oasis includes ample lounging space, a putting green, and beautiful landscaping, creating a perfect backdrop for gatherings with family and friends.

For golf lovers, the property includes two meticulously landscaped putting greens, allowing you to practice your short game in the comfort of your backyard.



The lush resort-style pool “is absolutely a custom, one-of-a-kind pool,” Burdette says.

The pool features a unique, stunning design, flowing over a tanning ledge into a moat.

In fact, the pool has two concrete, out-of-water tanning ledges off the hot tub.

The outdoor area’s elements – including the pool, hot tub, and moat – all connect and flow together beautifully.

On the far side of the pool overlooking the lake, there’s a bar with water flowing over it, plus benches where you can sit in or out of the water and enjoy a drink.

There are all sorts of fun options in the home’s outdoor space.

“You can look out over the lake or turn your chairs toward the patio, which has a TV and entertainment area, and the fireplace, which is just inside the living room,” Burdette says. “You can sit in the hot tub watching the games, and this is all just a few steps outside of the living room.”

HOOVER'S BLACKRIDGE COMMUNITY

Blackridge is a gated community with a private 100-acre lake. Residents live in beautiful custom-built homes and have access to amenities such as a clubhouse, a swimming pool, and private docks. Choosing this community means embracing a lifestyle that goes beyond mere waterfront living.

Custom Homes by Mancha Construction Partners LLC Co-owners John Mancha and Daniel Statum are the dynamic duo behind Mancha Construction Partners.

John and Daniel are visionary leaders with decades of combined experience, sharing a passion for crafting personalized, one-of-a-kind dream homes with quality craftsmanship and fresh, innovative designs.

“They truly provide only custom-built homes,” Burdette says.

Additionally, Mancha owns Mancha Pools and Mancha Concrete, offering top-quality pools, hot tubs, and landscaping to complement their builds.

“They are a complete one-stop shop for anything you need in the building and construction world,” Burdette says.

Their builds at Mancha Construction Partners are collaborative efforts rooted in deep bonds and extensive experience.

“It’s Daniel and his wife, Ashley Statum, who do the design and build,” Burdette says. “It’s John and his fiancée, Ashley Cagle, who do the pools, hardscapes, and landscaping. It’s also me and my wife, Jordan Burdette, at Steel City Realty Group. We all come together and do our part for their new construction builds.”

Join them at the 2025 Birmingham Parade of Homes to see their work firsthand and experience the essence of luxury living.

TOP-QUALITY VENDORS AND SPONSORS

To produce a house of this quality, it took a team of about 25 top-tier vendors and suppliers.

These vendors include: Alabama Cabinet Co. Inc., Sweet Home Appliance, Southern Bath & Kitchen, Marantha Stone and Floors, and AllSouth Stone & Brick, as well as Compass Building Construction LLC for framing, Cosentino for countertops, Fire Rock Products LLC for fireplaces, and Visual Comfort & Co. for lighting.

The sponsors of the 2025 Ideal Home are the Steel City Realty Group (Chris & Jordan Burdette), Reli Title (Morgan Means), and the Federal Savings Bank (Liz Crawford).



GROW YOUR BUSINESS AND SAVE MONEY WITH THE GBAHB

- Networking Opportunities
- Workers' Compensation Discounts
- Health Insurance Discounts
- Networking Opportunities
- Educational Opportunities
- Local, State and National Industry Advocacy



The Greater Birmingham
ASSOCIATION OF HOME BUILDERS

Learn more and apply now at
birminghambuilder.com



Signature
H O M E S
build your *life* with us.



from \$520,000

reinventing...
homebuilding

Signature
H O M E S
build your life with us.





**reimagined...
redefined...
redesigned...
ready for you**

scan



e-signaturehomes.com

WHO'S WHO

in Birmingham Home Building

Take this opportunity to read about our homebuilders in the event



BUILDSOUTH LLC

grantcrossing.com

Homes in Grant Crossing Subdivision are built by Buildsouth LLC, owned by local homebuilder Brandon Bowen. With a background in commercial and industrial construction, Brandon knows the most important aspects of a home are often unseen – its foundation and structure. Our homes are built to last, with attention to design, finishes, comfort, and functionality. Brandon and his team make the sales process easy and enjoyable.



CENTENNIAL HOMES, LLC

centennialhomesllc.com

Centennial Homes was founded in 2015 by Alan Howard and Scott Underwood, combining decades of experience in homebuilding and real estate. Alan has built over

3,800 homes and previously led one of Birmingham's major homebuilding firms. Scott, a licensed real estate professional since 1998, has been instrumental in marketing and developing homebuilding operations. Recognized for excellence, Scott was named Builder of the Year in 2018 and currently serves as the 2025 President of the Greater Birmingham Association of Home Builders. Centennial Homes is known for crafting high-quality homes with timeless designs that stand the test of time.

HOME 10



Curtis White Companies, Inc.
Since 1953

CURTIS WHITE COMPANIES

curtiswhitecompanies.com

With a legacy dating back to 1953, Curtis White Companies has been a cornerstone of Birmingham's construction industry. Founded by Curtis White, the company was built on craftsmanship and customer service. His son, Joe White, continues this

legacy as a life director with the National Association of Home Builders. In 2002, Katie White joined as a partner, guiding customers through the homebuilding process. Named Builder of the Year in 2022, Katie also serves on the board.

HOME 11



EMBRIDGE FINE HOMES

embridgehomes.com

Founded by Clark Parker and Bryan Cobb, Embridge Fine Homes brings more than 50 years of homebuilding experience. Clark previously served as a principal for one of Alabama's largest homebuilders. With award-winning designs and livable floor plans, Embridge Fine Homes has become a premier Birmingham homebuilder. Regardless of price point, we are committed to excellence and customer satisfaction.

HOMES 12-14



FAIRIN REALTY

leasefairin.com

Based in Birmingham, Fairin Realty blends Southern hospitality with real estate expertise. We lease newly constructed, developer-owned single-family homes across the area. Our management team provides top-tier customer service. With decades of experience, we stay ahead of market trends,

ensuring modern features meet clients' needs.

HOMES 39-40



HARRIS DOYLE
HOMES

HARRIS DOYLE HOMES

harrisdoyle.com

Harris Doyle Homes is a leading residential developer serving Auburn, Birmingham, Pike Road, and Panama City, Florida. We specialize in designing and building homes tailored to diverse lifestyles. Harris Doyle is a member of Clayton Properties Group, a Berkshire Hathaway company.

HOMES 15-25



HOLLAND HOMES

hollandhomesllc.com

For over 16 years, Daniel Holland has built a team that prioritizes honesty, quality, and integrity. At Holland Homes, we don't just build houses – we create communities where neighbors become friends. Whether you're a first-time buyer or seeking a forever home, we build places people are proud to call home.

HOMES 26-28

DISTINCTIVE DESIGNS



Your Choices... Our Expertise



Scott Underwood
205-965-3631

TIMELESS DESIGN, QUALITY CRAFTSMANSHIP



CENTENNIAL HOMES

License No. 26686



CentennialHomesllc.com



j.fante studio
design + construction

J.FANTE STUDIO

jfantestudio.com

Founded by a husband-and-wife team, j.fante studio specializes in residential design and construction in Birmingham. Auburn University architecture graduates, they developed their passion through Rural Studio. Their design-build structure ensures a seamless process from concept to completion.

HOME 37



KADCO HOMES

kadcohomes.com

For over 40 years, KADCO Homes has built exceptional homes rooted in quality, family values, and craftsmanship. We shape sought-after Birmingham neighborhoods, including The Legacy on Montevallo and The Crossing at Deerfoot-Trussville.

HOMES 29-32, 38



LOWDER NEW HOMES

lowdernewhomes.com

Since 1956, Lowder New Homes has built thousands

of homes in Alabama's most desirable communities, including Montgomery, Auburn, Opelika, and Lake Martin. Consistently ranked among the nation's top 100 builders by "Builder" magazine, we maintain a legacy of craftsmanship and customer service.

MALCHUS CONSTRUCTION

Since 1973, Malchus Construction has been an award-winning contractor known for integrity and results-driven performance. Founder Malchus Construction Inc. earned national recognition and won multiple Birmingham Parade of Homes awards.



MANCHA CONSTRUCTION PARTNERS LLC

mcpllc.com

Mancha Construction Partners, led by John Mancha and Daniel Statum, brings decades of experience in crafting dream homes. Their focus is on craftsmanship, innovative design, and personalized homebuilding. Experience their work at the 2025 Birmingham Parade of Homes.

HOMES 1, 33



SIGNATURE HOMES

e-signaturehomes.com

With over 100 communities and 10,000+ homeowners across Alabama and Tennessee, Signature Homes is a premier homebuilder in Birmingham. We craft high-quality, low-maintenance homes and cultivate community through homeowner events.

HOMES 2-9



TAYLOR BURTON COMPANY, INC.

taylorburton.com

For four generations, the Burton family has built custom homes in Birmingham and Over-the-Mountain areas. We are founded on hard work, integrity, and quality. Our team ensures every home or renovation meets the highest standards.

HOME 34



TOWER
HOMES

TOWER HOMES

tower-homes.com

For more than 30 years, Tower Homes has been committed to more than just construction – we help people build better lives. With over 2,000 homes completed, we are known for quality craftsmanship and exceptional customer experience.

HOMES 35, 36, 39, 40



VALOR
COMMUNITIES

VALOR COMMUNITIES

valorcommunities.com

Each home crafted by Valor Communities is built with experience, care, and professionalism. We use high-grade materials that exceed standard building codes, and every home includes a structural warranty.



“Redefining Luxury Through a Boutique Design Build Experience”

- Personalized Design Process
- Superior Craftsmanship & Materials
- Clear Process & Consistent Updates
- Full-Spectrum Luxury Build Experience

jwrightbuildingcompany.com
205.820.0100

Southern Living
custom builder program



J. WRIGHT BUILDING COMPANY HBLB # 25114

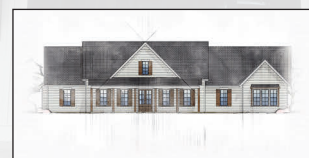
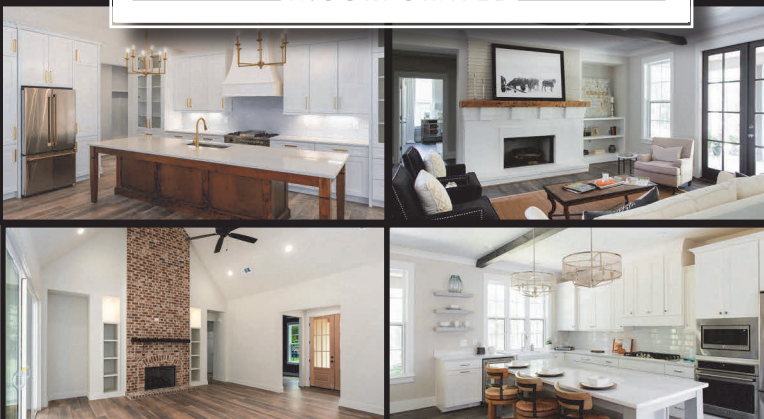
WRIGHT HOMES INCORPORATED HBLB # 16



“Designers and Builders of Fine Custom Homes”

- Trusted Legacy
- Seamless Design Process
- One-Stop Selections
- Proven Process & Experience
- Build Where You Want
- Exceptional Quality Standards
- Simplified Financing Solutions

wriethomesinc.com
205-477-6700



WHERE TO GO

Get to know more about
our featured communities



BRADBURY CREST AT BLACKRIDGE

livebradbury.com

Welcome to Bradbury Crest at Blackridge, a thriving new home community! Bradbury offers a vibrant neighborhood with opportunities to connect with neighbors and enjoy resort-style amenities. Homeowners will love the pool, fitness centers, cornhole courts, amphitheater, and Wiffle ball field – perfect for relaxation and fun. This dynamic community features our Signature Series, classic homes, and main-level living options, providing the perfect space to create lasting memories in a truly connected neighborhood. *Check out the community: 1185 Clifton Road, Hoover*

HOMES 7-9



GRANT CROSSING

grantcrossing.com

Grant Crossing is a planned community featuring modern farm-style homes

on oversized lots. The neighborhood includes a large nature preserve, two historic farm ponds, and a clubhouse. A community pool is planned for the second phase. Located in Argo, Grant Crossing offers convenient access to Trussville and Springville, plus an easy commute via Interstate 59. The featured homes sit on 3/4-acre lots, with wraparound porches, a blend of shingle and metal roofs, and modern rustic interiors with custom-built cabinets. *Check out the community: 175 Angus St., Trussville*



HILLSONG AT MT LAUREL

harrisdoyle.com/communities/birmingham/hillsong-at-mt-laurel

Hillsong at Mt Laurel, a new home community by Harris Doyle Homes, is conveniently located between Mt Laurel Elementary School and the Mt Laurel Commercial District. Residents can walk or take a golf cart to dining, Piggly Wiggly, and the school. The community is part of the Oak Mountain School District and will feature a pool, clubhouse, pocket parks,

pickleball and bocce courts, and sidewalks. Now selling! *Check out the community: 241 Jefferson Place, Birmingham*

HOMES 15, 16



A PRICE HIGHTOWER COMMUNITY

HUNTLEY KNOLL

leasefair.com/huntley-knoll

A nontraditional rental community in Pelham, Alabama, Huntley Knoll offers Craftsman-style single-family homes for lease. Residents enjoy more privacy and convenience than apartments, less maintenance than homeownership, and greater flexibility. Experience seamless living – ditch the apartment and discover Huntley Knoll! *Check out the community: 105 Huntley Knoll Drive, Pelham*

HOMES 39, 40



HUNTLEY RIDGE

tower-homes.com/new-homes/birmingham-al/huntley-ridge

Huntley Ridge, Tower Homes' newest community, is located in Pelham near I-65, I-459, and Highway 31. Offering contemporary farmhouse and Craftsman-style homes, floor plans range from one to two stories with three to four bedrooms, two-car garages, and two to three bathrooms. Enjoy easy access to Birmingham's attractions and a peaceful retreat at home. The on-site Design Studio allows buyers to personalize their homes with premium materials

and designer fixtures. Contact us today – your dream home awaits! *Check out the community: Huntley Ridge Drive, Pelham*

HOMES 35, 36

KIMBRELL STATION

valorcommunities.com/new-homes-in-birmingham/kimbrell-station

Kimbrell Station, built by Valor Communities, offers three-, four-, and five-bedroom floor plans with up to 2,900 square feet in McCalla. Residents enjoy easy access to UAB West Hospital, Tannehill Promenade, and other shopping and dining options. Commuters appreciate quick access to I-459, while nearby Tannehill State Park offers hiking trails, historical sites, and seasonal events. *Check out the community: 8061 Kimbrell Station Loop, McCalla*



LONGMEADOW

harrisdoyle.com/communities/birmingham/longmeadow-e

Longmeadow, located in Trussville, is a welcoming community with first-class amenities, including a clubhouse, swimming pool, and nature trails. Directly across from Hewitt-Trussville High School, the Trussville Community Center, and athletic fields, Longmeadow is part of the Trussville School System. New homes are selling fast – seize this opportunity! *Check out the community: 5412 Longmeadow Ridge, Trussville*

HOMES 17, 18

Trust Who The PROS Trust

Find out about the best kept secret
of home improvement pros.



Flooring | Kitchens | Baths | Sundries | And More

ONLY PROSOURCE OFFERS YOU:



Dedicated
Account Manager



Top Brands in
Flooring, Kitchen
& Bath



Low Wholesale
Pricing



Expert Design
Services



One-Stop
Shopping



Online Project
Planning Tools

ProSource®
WHOLESALE

Products & Pros for Home & Commercial Projects

ProSource of Birmingham 3197 Chandalar Place Drive
Pelham, AL 35124 | 205.624.4764

**Request an
appointment
today!**



Visit us online at prosourcewholesale.com/birmingham to learn more.



MOUNTAIN TOP ESTATES

mounatintoptrussville.com

Mountain Top Estates offers 20 estate-sized lots with stunning vistas. These wooded lots range from 150 feet wide to 400 feet deep and are served by Trussville's fire and police departments. Utilities include Alabama Power, Trussville Gas and Water, and underground services. *Check out the community: 7500 Mountain Top Circle, Trussville*

PRIMROSE AT EVERLEE

liveeverlee.com/primrose-at-everlee

Primrose at Everlee is an active-adult community fostering meaningful connections among homeowners. More than just beautiful homes, Primrose features a dedicated activities concierge who organizes social events. Offering Signature Series, detached, basement, and cottage homes, plus luxury condominiums, Primrose is where your next chapter begins. *Check out the community: Everlee Parkway, Hoover*



HOMES 2-4

SAGE PARK AT EVERLEE

liveeverlee.com/sage-park

Sage Park is the perfect

community for families looking to put down roots. With diverse home designs tailored for every lifestyle, Sage Park offers comfort and convenience. Residents enjoy proximity to The Social, an on-site amenity center with recreational and gathering spaces. *Check out the community: Everlee Parkway, Hoover*



HOMES 5, 6

SICARD HOLLOW FARMS

kadcohomes.com

Sicard Hollow Farms offers spacious estate-style lots with privacy and modern convenience. This peaceful setting is perfect for building your dream home while staying close to essential services. Coming soon! *Check out the community: 4401 Sicard Hollow Farms, Birmingham*

HOME 32

SIMMS LANDING

harrisdoyle.com/communities/birmingham/simms-landing

Simms Landing, built by Harris Doyle Homes, is a master-planned community in Pelham offering top-tier amenities, including a swimming pool, pavilion, and fitness center. Surrounded by dense forests and rolling hills, Simms Landing provides a peaceful escape with unparalleled convenience. *Check out the community: 5032 Simms Ridge, Pelham*



HOMES 19-22

SMITH GLENN

valorcommunities.com/new-homes-in-birmingham/smith-glen

Smith Glen, located in Warrior, Alabama, is a Valor Communities neighborhood offering three- and four-bedroom Space-ous™ floor plans with up to 2,400 square feet. Featuring two- and three-car garages, covered porches, and flex spaces, Smith Glen blends function with style. Residents enjoy a community pool, proximity to Rickwood Caverns State Park, and a short commute to Birmingham. *Check out the community: 400 Smith Glen Parkway, Warrior*

THE BRAY AT LIBERTY PARK

harrisdoyle.com/communities/birmingham/the-bray-at-liberty-park

The Bray at Liberty Park is a 700-acre town village featuring a town green, pedestrian walkways, and dining and shopping options, including On Tap Sports Café, Publix, and Starbucks. Zoned for Vestavia Hills schools, ranked among Alabama's top 10 districts. *Check out the community: 3607 Brayfield Lane, Vestavia Hills*



HOME 25

THE FOOTHILLS AT BLACKRIDGE

harrisdoyle.com/communities/birmingham/foothills-at-blackridge

This new construction

community in Hoover will add 227 new homes to the Birmingham, Alabama, area. The established Blackridge community highlights the natural beauty of its surroundings, offering residents a tranquil and secluded neighborhood along the Cahaba River. *Check out the community: 3004 Blackridge Blvd. South, Hoover*



HOMES 23, 24

WHITE OAK LANDING

lowdernewhomes.com

White Oak Landing, a premier Russell Lands development, offers luxury lakefront living with exquisitely designed homes by Lowder New Homes. Located just 75 minutes from Birmingham and 35 minutes from Auburn, White Oak Landing is a well-planned lakefront community offering turn-key cottage homes designed for effortless lake living. *Check out the community: 492 Transom Drive, Jacksons Gap*



WYNLAKE

valorcommunities.com/new-homes-in-birmingham/wynlake

We are excited to serve as your new home builder in the Greater Birmingham metropolitan area. Our peaceful Wynlake community offers a variety of four-, five-, and six-bedroom floor plans with up to 4,770 square feet of space. *Check out the community: 397 Wynlake Drive, Alabaster*

**We're the Love Lake Martin Team
Here to build your dream!**



Will Kinnebrew

Williams Ryan, LLC

205.337.0007

Builder

Paige Patterson

Love Lake Martin

205.616.8046

Realtor/Broker

Bill Kinnebrew

Homes by Indianwood

205.369.4541

Remodel Expert

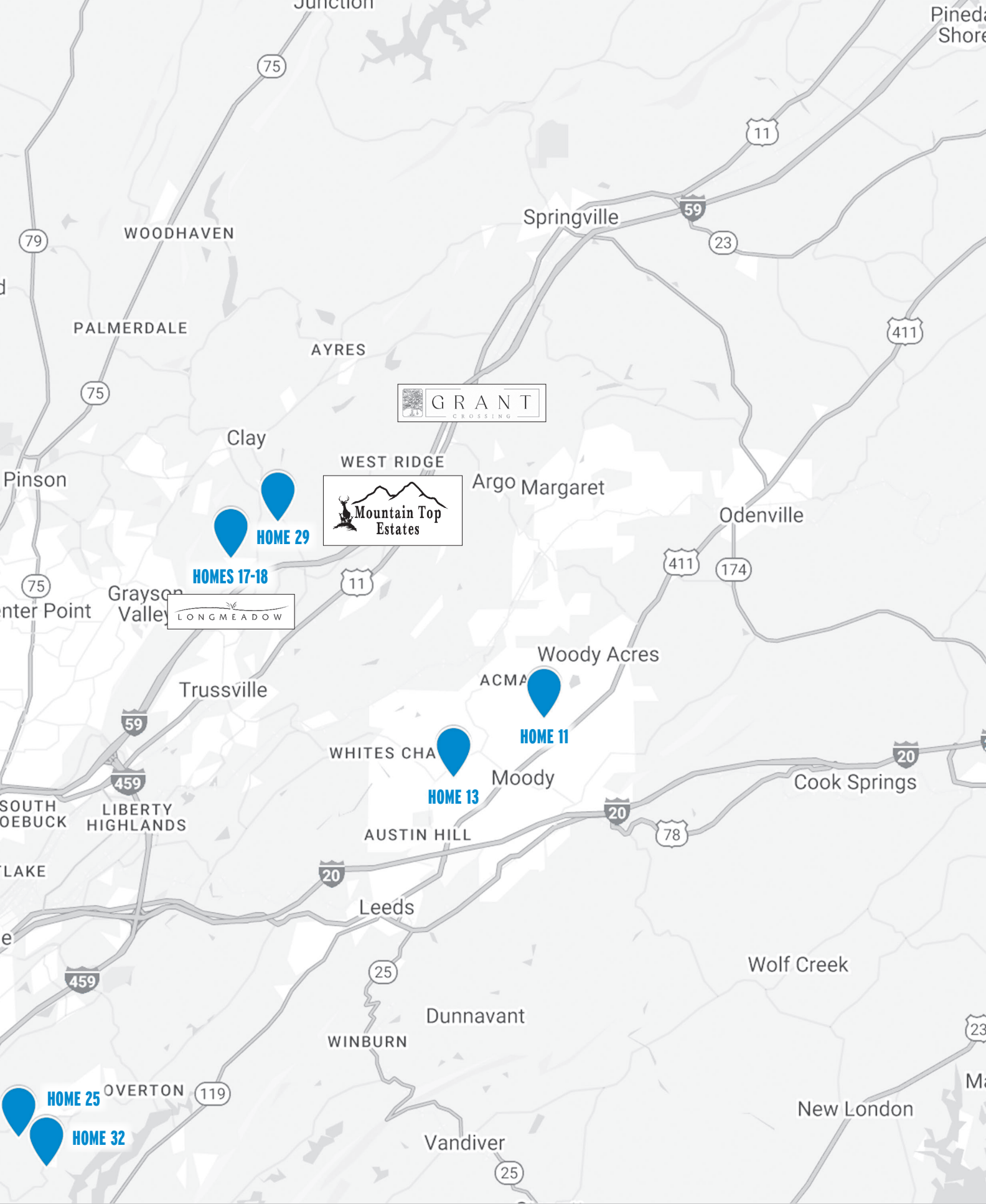


lovelakemartin.com

Home Builder License # 24850

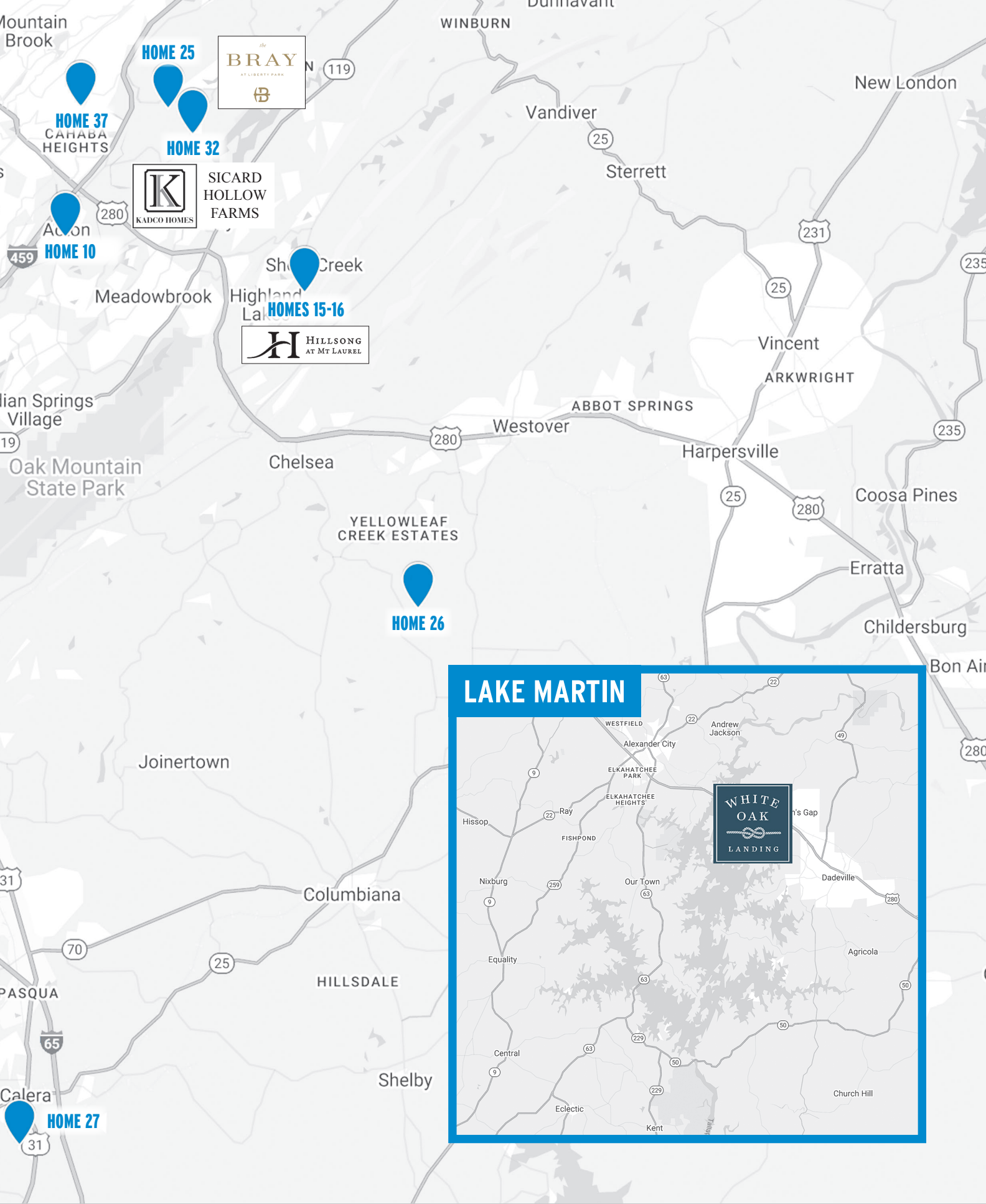
PARADE ROUTE





PARADE ROUTE





Parade of Homes

New Homes

1 Sunset Peninsula

2381 Blackridge Drive, Hoover
Community: Blackridge
Mancha Construction Partners LLC

2 The Linden 1A

4167 Arnold Lane, Hoover
Community: Primrose at Everlee
Signature Homes

3 Cantor 3A

4159 Arnold Lane, Hoover
Community: Primrose at Everlee
Signature Homes

4 Maren 1B

4163 Arnold Lane, Hoover
Community: Primrose at Everlee
Signature Homes

5 The Florence 2B

1644 Timberview Road, Hoover
Community: Sage Park at Everlee
Signature Homes

6 Mabel 2A

1648 Timberview Road, Hoover
Community: Sage Park at Everlee
Signature Homes

7 Mabel 2B

1632 Skye Pass, Hoover
Community: Bradbury Crest at Blackridge
Signature Homes

8 Lawson 2A

1628 Skye Pass, Hoover
Bradbury Crest at Blackridge
Signature Homes

9 Patterson 2D

1185 Clifton Road, Hoover
Community: Bradbury Crest at Blackridge
Signature Homes

10 Benmore House

2263 Five Oaks Trail, Vestavia
Community: Five Oaks
Centennial Homes

11 The Madison

977 Knobloch Lane, Moody
Community: Creels Crossing
Curtis White Companies

12 Mansfield

501 Ramsgate Drive, Maylene
Community: The Enclave at Cedar Grove
Embridge Fine Homes

13 Declan C

242 Oak Hill Lane, Moody
Community: Oak Hill
Embridge Fine Homes

14 Rockingham A

2353 Old Gould Run, Hoover
Community: The Parc at Lake Wilborn
Embridge Fine Homes

15 The Azalea

241 Jefferson Place, Birmingham
Community: Hillsong at Mt Laurel
Harris Doyle Homes

16 The Yarrow

879 Calvert Circle, Birmingham
Community: Hillsong at Mt Laurel
Harris Doyle Homes

17 The Bradford

5745 Longview Trail, Trussville
Community: Longmeadow
Harris Doyle Homes

18 The Tucker

5412 Longmeadow Ridge, Trussville
Community: Longmeadow
Harris Doyle Homes

19 The Franklin

5032 Simms Ridge, Pelham
Community: Simms Landing
Harris Doyle Homes

20 The Limestone

5136 Simms Ridge, Pelham
Community: Simms Landing
Harris Doyle Homes

21 The Morgan

5152 Simms Ridge, Pelham
Community: Simms Landing
Harris Doyle Homes

22 The Winston

5173 Simms Ridge, Pelham
Community: Simms Landing
Harris Doyle Homes

FOR SALE



JORDAN BURDETTE

205.905.9609

J.D. PERRY
205.533.1522

CHRIS BURDETTE
205.223.6054



Each Keller Williams office is independently owned and operated

23 The Logan

3004 Blackridge South Blvd., Hoover
Community: The Foothills at Blackridge
Harris Doyle Homes

24 The Millbrook

4113 Blackridge Crest, Hoover
Community: The Foothills at Blackridge
Harris Doyle Homes

25 The Beaumont

3607 Brayfield Lane, Vestavia Hills
Community: The Bray at Liberty Park
Harris Doyle Homes

26 Chelsea Ridge North Inspiration Home

4024 Chelsea Ridge Trail, Columbiana
Community: Chelsea Ridge North
Holland Homes

27 The Cove at Shiloh Creek Inspiration Home

338 Shiloh Creek Drive, Calera
Community: The Cove at Shiloh Creek
Holland Homes

28 The Preserve Single Family Model Home

555 Preserve Way, Hoover
Community: The Preserve
Holland Homes

29 The Drake

6551 Deerfoot Crossing Road, Trussville
Community: The Crossings at Deerfoot
KADCO Homes

30 The Everly

1112 Nina's Way, Birmingham
Community: Woodruff Cottages
KADCO Homes



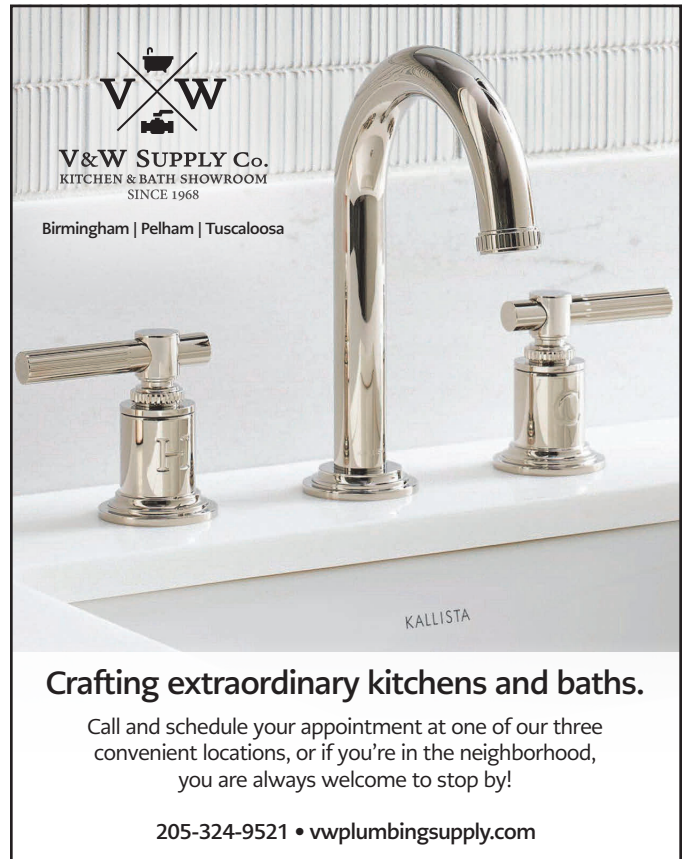
LIFTING
Your Expectations

PROLIFT
GARAGE DOORS

REPAIR • REPLACE
NEW CONSTRUCTION

205-215-6105
www.proliftdoors.com

LOCALLY OWNED & OPERATED



V&W
SUPPLY Co.
KITCHEN & BATH SHOWROOM
SINCE 1968

Birmingham | Pelham | Tuscaloosa

Crafting extraordinary kitchens and baths.

Call and schedule your appointment at one of our three convenient locations, or if you're in the neighborhood, you are always welcome to stop by!

205-324-9521 • vwplumbingsupply.com

31 The Laurel

1125 Nina's Way, Birmingham
Woodruff Cottages
KADCO Homes

32 The Bellamy

Sicard Hollow Road, Birmingham
Community: Sicard Hollow Farms
KADCO Homes

33 The Overlook

64 Bayview Drive, Alexander City
Community: River Oaks
Mancha Construction Partners LLC

34 Brickhaven

3308 Southbend Circle, Vestavia Hills
Community: Southbend
Taylor Burton Company Inc

35 Edmond

108 Huntley Ridge Drive, Pelham
Community: Huntley Ridge
Tower Homes

36 Huntley Ridge Model Home

113 Huntley Ridge Drive, Pelham
Community: Huntley Ridge
Tower Homes

Remodeling

37 Stone Ridge Reno

3301 Stone Ridge Drive, Mountain Brook
j.fante studio

Build to Rent

38 The Lucy

4429 Lennox Place, Birmingham
Community: Lennox
KADCO Homes

39 Model Home

105 Huntley Knoll Drive, Pelham
Community: Huntley Knoll
Tower Homes

40 The Willow

240 Huntley Knoll Place, Pelham
Community: Huntley Knoll
Tower Homes



2024



- ✦ Over \$60 Million in Sales
- ✦ #1 Agent for Volume Sold at ARC Realty (A COMPANY RECORD)
- ✦ #1 Sales Agent in Liberty Park
- ✦ #1 Sales Agent in all of Vestavia Hills

Please contact me for any real estate needs you may have. I'm looking forward to another amazing year in 2025!

Michelle Creamer
Associate Broker®
205.999.8164
michellesellslibertypark.com



BEING THE BEST AT WHAT WE DO EVERYDAY...
Making Dreams Come True, One Home at a Time

BIRMINGHAM

2871 Acton Road Suite 200
Birmingham, AL 35243
Office: (205) 969-3334

MOUNTAIN BROOK

2231 20th Avenue S Ste 205
Birmingham, AL 35223
Office: (205) 948-1740



FIRST FEDERAL MORTGAGE

www.1stfedmortgage.com

FDIC 
NMLS#410785

1 Ideal Home 2025

BLACKRIDGE

2381 Blackridge Drive, Hoover
BEDS: 6 / BATHS: 5 / SQ FT: 6573



Steel City Realty KW
Christopher and Jordan Burdette
205-223-6054
cburdette@kw.com
manchahardscapes.com



3 Cantor 3A

PRIMROSE AT EVERLEE

4159 Arnold Lane, Hoover
BEDS: 2.5 / BATHS: 3 / SQ FT: 3157



Signature Homes
Nancy Hale
205-515-1190
nhale@e-signaturehomes.com
e-signaturehomes.com



2 The Linden 1A

PRIMROSE AT EVERLEE

4167 Arnold Lane, Hoover
BEDS: 2.5 / BATHS: 3 / SQ FT: 1952



Signature Homes
Nancy Hale
205-515-1190
nhale@e-signaturehomes.com
e-signaturehomes.com



4 Maren 1B

PRIMROSE AT EVERLEE

4163 Arnold Lane, Hoover
BEDS: 3.5 / BATHS: 3 / SQ FT: 2592



Signature Homes
Sarah Turner
205-612-6157
sturner@e-signaturehomes.com
e-signaturehomes.com



5

The Florence 2B

SAGE PARK AT EVERLEE

1644 Timberview Road, Hoover
BEDS: 2.5 / BATHS: 3 / SQ FT: 2406



Signature Homes
Jaye Watts
205-641-9423
jwatts@e-signaturehomes.com
e-signaturehomes.com



6

Mabel 2A

SAGE PARK AT EVERLEE

1648 Timberview Road, Hoover
BEDS: 4.5 / BATHS: 4 / SQ FT: 3815



Signature Homes
Annabelle Robinson
205-999-1624
arobinson@e-signaturehomes.com
e-signaturehomes.com



Regions Construction-to-Permanent Loans

Regions Mortgage offers an array of Construction-to-Permanent options that offer the convenience of a one-time closing and loan amounts up to \$2 million.

It's fast, easy, and allows you to focus on the more exciting details — like which light fixtures to choose!

Contact one of our experienced professionals today.



Eric Caldwell

NMLS 546188
Birmingham, AL
205.766.8491 | eric.caldwell@regions.com



Adam Coe

NMLS 1198188
Birmingham, AL
205.224.7820 | adam.coe@regions.com



Matt Bearden

NMLS 594920
Birmingham, AL
205.533.5943 | matt.bearden@regions.com



Julie Moore

NMLS 197045
Tuscaloosa, AL
205.314.9315 | julie.moore@regions.com



JK Keasler

NMLS 1909153
Birmingham, AL
205.994.0436 | jk.keasler@regions.com



Mike Morris

NMLS 546483
Birmingham, AL
205.766.8578 | mike.morris@regions.com



© 2025 Regions Bank. Member FDIC. NMLS# 174490. All loans subject to qualification, required documentation and credit approval. Certain exclusions may apply. Loan terms and availability subject to change. | Regions and the Regions logo are registered trademarks of Regions Bank. The LifeGreen color is a trademark of Regions Bank (03/25)

7

Mabel 2B

BRADBURY CREST AT BLACKRIDGE

1632 Skye Pass, Hoover
BEDS: 4.5 / BATHS: 4 / SQ FT: 3884



Signature Homes
Tracy Murphy
205-966-9072
tmurphy@e-signaturehomes.com
e-signaturehomes.com



9

Patterson 2D

BRADBURY CREST AT BLACKRIDGE

1185 Clifton Road, Hoover
BEDS: 3.5 / BATHS: 4 / SQ FT: 4388



Signature Homes
Brooke Gann
205-563-6229
bgann@e-signaturehomes.com
e-signaturehomes.com



8

Lawson 2A

BRADBURY CREST AT BLACKRIDGE

1628 Skye Pass, Hoover
BEDS: 4 / BATHS: 5 / SQ FT: 3793



Signature Homes
Tracy Murphy
205-966-9072
tmurphy@e-signaturehomes.com
e-signaturehomes.com



10

Benmore House

FIVE OAKS

2263 Five Oaks Trail, Vestavia
BEDS: 3.5 / BATHS: 4 / SQ FT: 3349



Centennial Homes, LLC
Judy Beaton
205-222-4629
judycbeaton@gmail.com
centennialhomesllc.com



DONOVAN

B U I L D E R S L L C

With over 20 years of experience in new construction and remodeling, Donovan Builders is known for exceptional craftsmanship, innovative design, and attention to detail. Whether building from the ground up or transforming an existing home, we create spaces where families can thrive.



Grey Oaks

Move-In Ready Homes Available!

17 Homes Under Construction

49 Lots Total

SECURE YOUR'S TODAY!!

Lakewood Estates

Exclusive Acreage Lots
2 Stunning Homes Available
Built to Perfection



Calera Meadows

Spacious 1-Acre Lots - Only 4 Available- Don't Miss Out!



Karen Spann
205-790-5113
Annette Durrett
205-243-9970
Billy Bowen
256-749-8131

*Discover Quality,
Craftmanship, and
Community*
www.donovanbuilderllc.com
205-678-9481

11 The Madison

CREELS CROSSING

977 Knobloch Lane, Moody
BEDS: 4.5 / BATHS: 4 / SQ FT: 3220



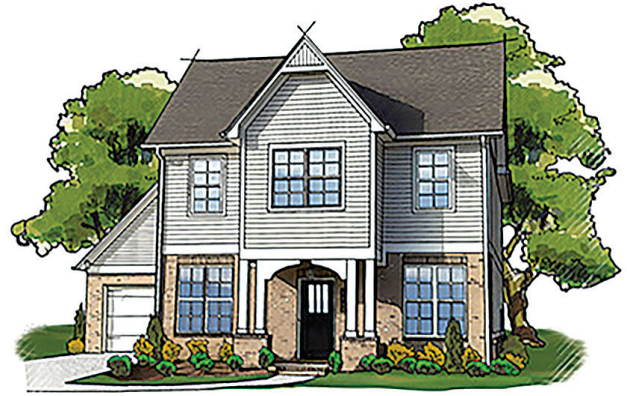
Curtis White Companies
Katie McLaughlin
205-699-2283
katie@curtiswhitecompanies.com
curtiswhitecompanies.com



13 Declan C

OAK HILL

242 Oak Hill Lane, Moody
BEDS: 3.5 / BATHS: 5 / SQ FT: 2379



Embridge Fine Homes
Sue Willoughby
205-222-5959
swilloughby@embridgerealty.com
embridgehomes.com



12 Mansfield

THE ENCLAVE AT CEDAR GROVE

501 Ramsgate Drive, Maylene
BEDS: 4.5 / BATHS: 5 / SQ FT: 2953



Embridge Fine Homes
Thomas Gamble
205-616-9785
tgamble@embridgerealty.com
embridgehomes.com



14 Rockingham A

THE PARC AT LAKE WILBORN

2353 Old Gould Run, Hoover
BEDS: 4.5 / BATHS: 5 / SQ FT: 3248



Embridge Fine Homes
Kristi Parker
205-965-9521
kparker@embridgerealty.com
embridgehomes.com



BLOOMIN' BLINDS OF BIRMINGHAM

ONE-STOP SHOP

FOR INTERIOR & EXTERIOR STYLE & SHADE



INTERIOR & EXTERIOR SOLUTIONS FOR EVERY SPACE!

Custom interior shutters,
shades, blinds and more

Stunning pergolas &
motorized patio screens

WHY CHOOSE BLOOMIN' BLINDS OF BIRMINGHAM?

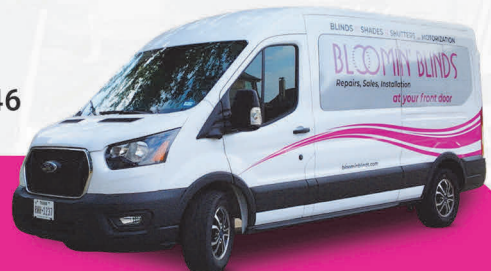
- ✓ Full-service sales, installation & repairs
- ✓ Mobile showroom – We bring the samples to your home
- ✓ Locally owned & trusted professionals

CALL TODAY FOR A FREE CONSULTATION!

📍 Serving Birmingham & Surrounding Areas

🌐 www.bloominblindsbirmingham.com | (205) 649-5746

YOU CAN ALWAYS TRUST THE GUYS IN PINK!



15

The Azalea

HILLSONG AT MT LAUREL

241 Jefferson Place, Birmingham
BEDS: 3 / BATHS: 4 / SQ FT: 2821



Harris Doyle Homes
Todd Tucker
205-999-8633
toddtrealtor@gmail.com
harrisdoyle.com



HARRIS DOYLE
HOMES

16

The Yarrow

HILLSONG AT MT LAUREL

879 Calvert Circle, Birmingham
BEDS: 3.5 / BATHS: 4 / SQ FT: 3018



Harris Doyle Homes
Todd Tucker
205-999-8633
toddtrealtor@gmail.com
harrisdoyle.com



HARRIS DOYLE
HOMES



- Doors
- Windows
- Tile
- Siding
- Stair Parts
- Flooring

1716 28th Avenue South
Birmingham, AL 35209
205-864-8226
www.webbbuildingessentials.com
Open Weekdays 9-5

WEBB
BUILDING ESSENTIALS



*From Creation to
Completion!*



17

The Bradford

LONGMEADOW

5745 Longview Trail, Trussville
BEDS: 2 / BATHS: 3 / SQ FT: 1649



Harris Doyle Homes
Michael Harden
205-739-9175
michael.harden@harrisdoyle.com
harrisdoyle.com



HARRIS DOYLE
HOMES

18

The Tucker

LONGMEADOW

5412 Longmeadow Ridge, Trussville
BEDS: 2 / BATHS: 3 / SQ FT: 2009



Harris Doyle Homes
Michael Harden
205-739-9175
michael.harden@harrisdoyle.com
harrisdoyle.com



HARRIS DOYLE
HOMES



CHRIS BAKANE
Commercial Relationship Manager

7 Office Park Circle
Birmingham, AL 35223
205-965-6554
chris.bakane@cbsbank.net



CB&S Bank

Since 1906

All loans subject to credit approval.



Build Stronger, Grow Faster with Your Trusted Commercial Banker

Whether you're a builder, developer, supplier, trade company or want to purchase/refinance residential property, you need a banking partner who understands your needs.

19

The Franklin

SIMMS LANDING

5032 Simms Ridge, Pelham
BEDS: 2.5 / BATHS: 4 / SQ FT: 2752



Harris Doyle Homes
Kristie Cotter
970-301-1891
kristie.cotter@harrisdoyle.com
harrisdoyle.com



HARRIS DOYLE
HOMES

21

The Morgan

SIMMS LANDING

5152 Simms Ridge, Pelham
BEDS: 2 / BATHS: 3 / SQ FT: 1295



Harris Doyle Homes
Kristie Cotter
970-301-1891
kristie.cotter@harrisdoyle.com
harrisdoyle.com



HARRIS DOYLE
HOMES

20

The Limestone

SIMMS LANDING

5136 Simms Ridge, Pelham
BEDS: 2 / BATHS: 3 / SQ FT: 1383



Harris Doyle Homes
Kristie Cotter
970-301-1891
kristie.cotter@harrisdoyle.com
harrisdoyle.com



HARRIS DOYLE
HOMES

22

The Winston

SIMMS LANDING

5173 Simms Ridge, Pelham
BEDS: 2 / BATHS: 4 / SQ FT: 1599



Harris Doyle Homes
Kristie Cotter
970-301-1891
kristie.cotter@harrisdoyle.com
harrisdoyle.com



HARRIS DOYLE
HOMES



Serving the Southeast's
Finest Builders
Since 1997

myallsouth.com

345 State Farm Parkway
Birmingham, AL 35209



Discover your favorite luxury brands and more!



Birmingham | Huntsville | Montgomery | Chattanooga | Nashville | Panama City | Fort Walton



MAYER | **LIGHTING
SHOWROOM**

VISUAL COMFORT & CO.
BETTER TOGETHER

*Experience Visual Comfort & Co at
Mayer Lighting Showroom Today!*

BIRMINGHAM • DOTHAN • PELHAM
MAYERLIGHTING.COM | [@MAYERLIGHTINGSHOWROOM](https://www.instagram.com/mayerlightingshowroom)

23

The Logan

THE FOOTHILLS AT BLACKRIDGE

3004 Blackridge South Blvd., Hoover
 BEDS: 3.5 / BATHS: 4 / SQ FT: 3142



Harris Doyle Homes
 Andy Smith
 205-529-4213
 andy.smith@harrisdoyle.com
 harrisdoyle.com



HARRIS DOYLE
 HOMES

25

The Beaumont

THE BRAY AT LIBERTY PARK

3607 Brayfield Lane, Vestavia Hills
 BEDS: 4.5 / BATHS: 5 / SQ FT: 3392



Harris Doyle Homes
 Diane Godber
 205-369-5583
 diane@harrisdoyle.com
 harrisdoyle.com



HARRIS DOYLE
 HOMES

24

The Millbrook

THE FOOTHILLS AT BLACKRIDGE

4113 Blackridge Crest, Hoover
 BEDS: 2 / BATHS: 3 / SQ FT: 2280



Harris Doyle Homes
 Andy Smith
 205-529-4213
 andy.smith@harrisdoyle.com
 harrisdoyle.com



HARRIS DOYLE
 HOMES

26

Inspiration Home

CHELSEA RIDGE NORTH

4024 Chelsea Ridge Trail, Columbiana
 BEDS: 2.5 / BATHS: 3 / SQ FT: 1823



Holland Homes
 205-533-8709
 chelseah@hollandhomesllc.com
 hollandhomesllc.com



27

Inspiration Home

THE COVE AT SHILOH CREEK

338 Shiloh Creek Drive, Calera
BEDS: 2 / BATHS: 3 / SQ FT: 1391



Holland Homes

205-415-4243
chelseah@hollandhomesllc.com
hollandhomesllc.com



We Keep You Moving.

Team Elevator, LLC
BIRMINGHAM • MONTGOMERY • HUNTSVILLE

205-252-0912
teamelevator.net



• Commercial/Residential/Auto •
• Wraps/Tint /Graphics •
sales@srstintandgraphics.com
205-337-3691

28 Single Family Model Home

THE PRESERVE

555 Preserve Way, Hoover
BEDS: 2 / BATHS: 3 / SQ FT: 1589



Holland Homes

205-822-9348
lanam@hollandhomesllc.com
hollandhomesllc.com



Serving Birmingham and
Surrounding Communities for 30 Years.



GEORGE HUDSON
FOREST HUDSON

205-621-6223
oakmountaincabinetry.com
139 Corporate Way
Pelham, AL 35124

Enjoy a complimentary Southern Sweet Dessert
with \$20 or more entree purchase*



cajunroux.net

5220 Peridot Pl Ste 132
Hoover, AL 35244

*VALID APRIL 26-28 & MAY 3-5, 2025

29

The Drake

THE CROSSINGS AT DEERFOOT

6551 Deerfoot Crossing Road, Trussville
BEDS: 3.5 / BATHS: 4 / SQ FT: 2741



KADCO Homes
Catherine Beaton
205-862-5151
cmbdmoi@gmail.com
kadcohomes.com



31

The Laurel

WOODRUFF COTTAGES

1125 Nina's Way, Birmingham
BEDS: 4 / BATHS: 4 / SQ FT: 2724



KADCO Homes
Catherine Beaton
205-862-5151
cbeatonrealtor@gmail.com
kadcohomes.com



30

The Everly

WOODRUFF COTTAGES

1112 Nina's Way, Birmingham
BEDS: 3.5 / BATHS: 4 / SQ FT: 2724



KADCO Homes
Jessica Armstrong
205-382-3725
jessica@theupswingco.com
kadcohomes.com



32

The Bellamy

SICARD HOLLOW FARMS

Sicard Hollow Road, Birmingham
BEDS: 4 / BATHS: 3.5 / SQ FT: 2500

Coming soon!
Check kadcohomes.com
for more information

KADCO Homes
Jessica Armstrong
205-382-3725
jessica@theupswingco.com
kadcohomes.com



33

The Overlook

RIVER OAKS

64 Bayview Drive, Alexander City
BEDS: 4 / BATHS: 4 / SQ FT: 2989



Steel City Realty KW
Christopher and Jordan Burdette
205-223-6054
cburdette@kw.com
manchahardscapes.com



35

Edmond

HUNTLEY RIDGE

108 Huntley Ridge Drive, Pelham
BEDS: 1 / BATHS: 3 / SQ FT: 1731



Tower Homes
Joseph Heckel
205-914-1201
joseph@tower-homes.com
tower-homes.com



34

Brickhaven

SOUTHBEND

3308 Southbend Circle, Vestavia Hills
BEDS: 3 / BATHS: 4 / SQ FT: 3722



Taylor Burton Company Inc
Scott Perry
205-281-0986
sperry@realtysouth.com
taylorburton.com



36

Model Home

HUNTLEY RIDGE

113 Huntley Ridge Drive, Pelham
BEDS: 2.5 / BATHS: 3 / SQ FT: 1748



Tower Homes
Joseph Heckel
205-914-1201
joseph@tower-homes.com
tower-homes.com



Remodeling

37 Stone Ridge Reno MOUNTAIN BROOK

3301 Stone Ridge Drive
BEDS: 2 / BATHS: 3 / SQ FT: 2600

j.fante studio
Joe Fante
205-810-6600
joe@jfantestudio.com
jfantestudio.com



j.fante studio
design + construction



When You Want Flooring Done Right!

Special financing available.
See store for details.

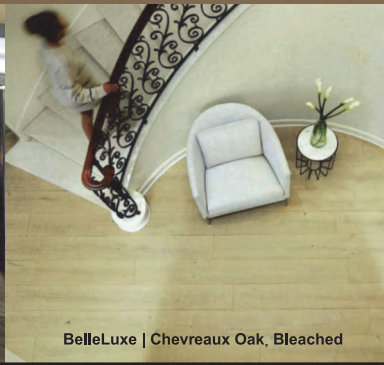
Karastan®



LuxeCraft |
Refined Forest, Sugar Cane Herringbone



Elevate your floor decor with the sophisticated designs and remarkable quality of Karastan flooring. Choose from their beautiful carpet, amazing vinyls or the elegant BelleLuxe wood collection.



BelleLuxe | Chevreaux Oak, Bleached

It all starts with the flooring. let our experts help you find the best for your home.

ISSIS & SONS

carpet, rugs and hard surfaces

www.issisandsons.com • issisfurniture.com • instagram #issisfurniture

2858 Hwy. 31 South | 2815 Greystone Commercial Blvd.

Pelham, AL 35124

Birmingham, AL 35242

(205) 663-2310

(205) 981-2311



A Strong Foundation.

Whether you're planning to build, remodel, or purchase a home, begin with solid financial support. Our experienced local bankers provide expert advice with custom-built construction, mortgage, and home equity loan solutions. For your next home project, rely on our strength.

RIVER

BANK & TRUST

RIVERBANKANDTRUST.COM

Equal Housing Lender Member FDIC NMLS 405629

1425 Montgomery Hwy, Suite 151, Vestavia Hills | 205.588.0500

Build to Rent

38

The Lucy

LENNOX

4429 Lennox Place, Birmingham
BEDS: 3 / BATHS: 3 / SQ FT: 1646



KADCO Homes
Tammy Davis
205-966-1121
tammydvs19@gmail.com
liveatlennox.com



39

Model Home

HUNTLEY KNOLL

105 Huntley Knoll Drive, Pelham
BEDS: 2 / BATHS: 2.5 / SQ FT: 1366



Fairin Realty
Will Hightower
205-896-1410
will.hightower@tower-homes.com
leasefairin.com



CLEMENT
homes

Dennis Clement
Custom Home
Builder

buildaddy.com

205-903-1068
AL#5268



A Construction Resources Company

205.943.0680
CRHomeAL.com

40

The Willow

HUNTLEY KNOLL

240 Huntley Knoll Drive, Pelham
BEDS: 2 / BATHS: 2.5 / SQ FT: 1486



Fairin Realty
Will Hightower
205-896-1410
will.hightower@tower-homes.com
leasefairin.com



Struggling to align your people strategy with your business strategy?

THERE'S A SOLUTION FOR THAT

Members of a high-performing team go above and beyond because their role, team, manager and culture engages and inspires them.

In order to have a high performing team, not only must you have the right people in the right roles, but you must also know how to manage them in the way in which they will respond.

We unleash the power of behavioral analytics to allow you to achieve both of these objectives. Then, we transfer the knowledge to you and allow you to build a winning-culture with ongoing support.

CONTACT US TODAY

for a free six-minute demo and learn how to make
your organization a high performing culture.

Cvstrategy.com



OUTDOOR LIVING SOLUTIONS

THINKING OF TRANSFORMING YOUR BACKYARD? LET US SHOW YOU WE ARE THE RIGHT CHOICE

Superior Craftsmanship Excellent Customer Service

Creative and Innovative Landscape Design Solution

Creative and Innovative Landscape Construction Techniques

Our Team is Dedicated to Our Clients Vision

We Adhere to Our Committed Timetable

DESIGN...BUILD...ENJOY

205.645.5857

office@outdoorsolutionsms.com

outdoorlivingsolutionsllc.com



We Saw Potential—j.fante studio Saw the Plan: A Mountain Brook Home Reimagined

Mountain Brook, Alabama Remodel

by Roxanne Hale

Glenn and Cathy Antee were delighted when they purchased their Mountain Brook home in July 2023. They'd found the perfect location in 3301 Stoneridge Drive—what they needed next was the perfect transformation.

“

“Our daughter was friends with Joe Fante through church, so we reached out to talk about a possible remodel,” Glenn said. “What started as a conversation quickly became a full-scale renovation, and we couldn’t be happier that we made that call.”

Glenn and Cathy worked closely with Joe, Sarah (designer), and Jamie (construction supervisor) throughout the entire process. **“They were attentive, creative, and genuinely cared about making our house feel like our home,”** Glenn shared. **“They listened to everything we wanted, and the architect did a wonderful job incorporating our ideas into a cohesive design.”**



Picking a favorite space? Nearly impossible for the Antees. At the center: a show-stopping family room with a cathedral ceiling and limestone gas fireplace, flowing seamlessly into a custom kitchen with Thermador appliances, a giant island, and a charming breakfast nook. The butler’s pantry—complete with wine cooler, pebble ice maker, and bevel-cut glass—adds a luxe touch.

But the show-stopper just might be what’s outside. **“That screened porch,”** Glenn told us. **“It’s a favorite already.”** Designed with a real wood-burning bluestone fireplace, arched corbels, Garapa wood flooring, and horizontal railings, the porch feels like a mountain retreat right here in Mountain Brook.

Of course, no renovation comes without a few curveballs. The Antees hit a snag with soil conditions when adding on to the house—an issue that required input from a city engineer and some reworking of the foundation.



“It caused a delay, sure, but we appreciated that the Fante team didn’t take shortcuts,” Glenn said. “They brought in the right people and made sure it was done right. That gave us peace of mind.”

”

Glenn and his family had a vision—j.fante studio made it better. **“They showed us possibilities we hadn’t imagined,”** Glenn said. **“They boosted both the function and the curb appeal. People stop to compliment our home all the time.”**

Why choose j.fante studio? Glenn doesn’t hesitate: **“They’re top-notch—creative, caring, and easy to work with. We’d recommend them to anyone.”**

www.jfantestudio.com



j.fante studio
design + construction

A Life Well Crafted: Larry & Laura Myers' Experience Building with Harris Doyle

The Rosemont Floor Plan: The Foothills at Blackridge

by Roxanne Hale

When it comes to homebuilding, Larry and Laura Myers are seasoned pros. Having built 15 homes together, they know what they want—and what to expect! But when they chose to build their newest home in The Foothills at Blackridge with Harris Doyle, they discovered a homebuilding experience unlike any other—one that was seamless, thoughtful, and genuinely enjoyable.

“

“We’ve built many homes, but this was our first with Harris Doyle,” Laura shared. “The process was structured, well thought out, and honestly—just fun. The entire team was accommodating, making sure our vision became a reality.”

For the Myers, building new is more than just a preference—it’s something they truly enjoy and take pride in. They love the excitement of designing a home that fits their needs and lifestyle, selecting the perfect floor plan, and watching their ideas come to life. When they chose The Rosemont, they made key customizations, including expanding their home to feature a three-car garage, which also created additional space in the upstairs loft.

From start to finish, Harris Doyle’s commitment to quality craftsmanship and thoughtful design was evident in every detail.

The Rosemont



Resort Living Along the Cahaba River

- Enjoy a private pool, pavilion, firepit, walking trails.
- Putting green, bocce ball, cornhole, and playground for all ages.
- Exclusive Access to Bradbury at Blackridge with additional pools, pickleball courts, fitness wings, amphitheater, and social spaces.
- Green spaces, event areas, and gathering spots to connect with neighbors.
- Prime Hoover Location, just minutes from top restaurants, shopping, and everyday conveniences.



“We were impressed by the variety of floor plans, the quality of design options, and the lot sizes,” Laura said. “Even more, we love that the amenities were built from the start, so we could enjoy them right away. Our grandson has already made great use of the playground, and we’re excited to spend time at the pool this summer!”

Now that they’ve settled in, the Myers can already feel the difference. Their home is filled with natural light—a must-have for Laura, who works from home—and offers a seamless flow that makes everyday living feel effortless. Their spacious backyard is perfect for their grandchildren, and their favorite space, the kitchen, is a standout feature that perfectly blends function and style. *“I love to cook, and the layout makes everything feel natural and easy. Plus, I have more cabinet space than ever before!”*

But Life Well Crafted isn’t just a sophisticated tagline for Harris Doyle Homes—it’s something you can feel in every aspect of the home and community. Beyond their front door, Larry and Laura have found a true sense of peace, quality, and connection in The Foothills at Blackridge. *“Even with construction still happening, the neighborhood is incredibly quiet,” Laura noted. “And the neighbors have been beyond welcoming.”*

Looking back, what stands out most to them isn’t just the home—it’s the people. “Harris Doyle has a true passion for what they do,” Laura said. “We’ve worked with a lot of builders over the years, but this team is unmatched in their dedication to quality and design. They made this process enjoyable from start to finish, and we couldn’t be happier with our decision.”

”

For Larry and Laura, this isn’t just another house—it’s a home designed with care, built with expertise, and part of a community that truly embodies a *Life Well Crafted*.

www.harrisdoyle.com

Trust, Trimwork, and Timeless Design: Centennial Homes and Scott Underwood

Kevin & Ranae Pearce | The Heritage at Lake Martin

by Roxanne Hale

When Kevin and Ranae Pearce first set their sights on building at Lake Martin, they weren't just dreaming of a lake house—they were inspired by something more enduring.



"We always admired Centennial's homes on Lake Martin," said Ranae. "The way they used natural light, cedar, and trim work—creating homes that looked like it had always been there. That's what drew us in. Scott Underwood wasn't just building houses, he was using what we like to refer to as Smart Lake Architecture—homes that belong to the land, not fight against it."



From the start, working with Scott Underwood and his team at Centennial Homes felt like more than just a project. It felt like a partnership. "Scott, Kristen, Allen, and Coleman watched over every detail with care," Kevin added. "They helped us make smart decisions and offered creative but timeless suggestions that made our home unique—without going off the deep end into trendy or overdone."

And while building a home can sometimes feel like a crash course in decision fatigue, the Centennial team broke the process down into manageable steps. "They didn't throw a million decisions at us at once," Ranae said. "They set up smaller meetings that allowed us to really think through each choice. That made a huge difference."



Their favorite feature? That's an easy one. "We had a little extra space in the basement and decided to turn it into a speakeasy-style bar," Kevin said. "It's where friends can gather, the drinks can flow, and no one ever wants to leave." The cedar beams in the living room, paired with the custom trimwork, complete the lakefront magic.

As with any build, trust was key. "We couldn't be at the property every day, so having someone we trusted was non-negotiable," Kevin said. "Scott was transparent, always available, and treated the project like it was his own."



So what would they tell someone thinking about building with Scott Underwood and Centennial Homes?

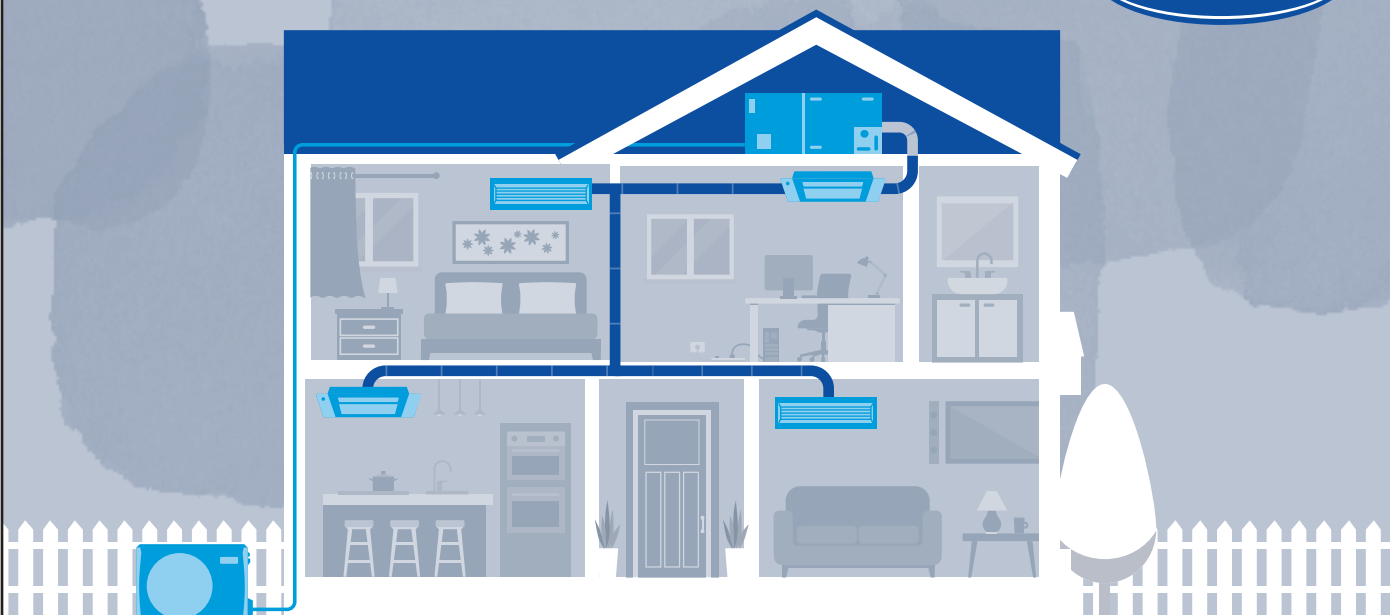
"Do it," they said without hesitation. "Choose a builder you can trust, someone who communicates, listens, and really cares."

For the Kevin and Ranae Pearce, that was Scott Underwood and Centennial Homes.

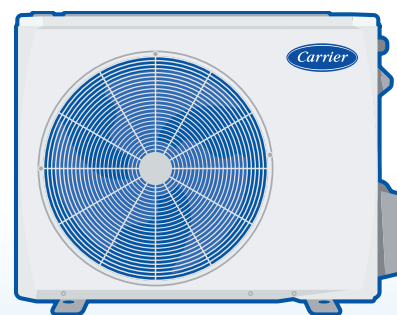


**CENTENNIAL
HOMES**

centennialhomesllc.com

Efficient. Electric. Environmentally Responsible.



CARRIER® CROSSOVER SOLUTIONS: THE SINGLE SYSTEM FOR YOUR COMFORT NEEDS

Less Energy. More Savings.

When less energy is needed to heat or cool your home, lower utility usage and costs follow naturally. Crossover Solutions are sustainable options that save you money—and help the environment—long-term.



Highly efficient, with up to 19.0 SEER2 ratings and ENERGY STAR® certifications



Better system longevity with less cost and materials needed to maintain units



Units transfer heat in the air (even in cold climates) to the home, which uses less power

Simple Integration

Our innovative outdoor units pair with virtually any HVAC design. So, no matter your application, integration is a breeze—leveraging current infrastructure to limit installation needs and environmental impact.



Slim outdoor unit design ideal for small and zero lot lines



Works with existing ductwork, furnaces, fan coils and connections



An HVAC upgrade, without the waste and stress of a whole-system overhaul

Sustainable Comfort

Homeowner comfort is our priority. And with reliable systems that offer minimal disruption, precise temperature control and high performance in any climate, Carrier solutions certainly aren't short on it.



Quiet operation for less disturbance outdoors—about as soft as the hum of a refrigerator



Inverter technology creates temperature stability, with less swings and no hard shutoffs



Reliable comfort and performance across seasons and in extreme conditions

Find a Carrier® HVAC Expert Near You!

carrier.com/residential



2025 SPONSORS AND VENDORS

SPONSORS



VENDORS

TRADE

COMPANY

CABINETS	Alabama Cabinet Co., Inc.
EXTERIOR STONE	AllSouth Stone & Brick, LLC
CONCRETE	Bama Concrete Products Co., Inc.
GRAVEL	Billy Franklin Enterprises, Inc.
FRAMING MATERIALS	Browns Lumber & Building Supply, Inc.
FRAMING	Compass Building Construction, LLC
COUNTERTOPS	Cosentino
INSULATION	EcoLogical Insulation
FIREPLACES	Fire Rock Products, LLC
HOUSE PLAN DESIGNER	Frusterio Design, Inc.
TREE REMOVAL	Gray's Tree Services
ENGINEERING	Keith L. Hager, PE
RETAINING WALL	Mancha Concrete, LLC
POOL, OUTDOOR LIVING & LANDSCAPE	Mancha Hardscapes, LLC and Marantha Stone and Floors
HVAC	Optimum Service Group
ELECTRICAL	Pine Belt Electrical Services, LLC
GARAGE DOORS	Platinum Garage Door Services, LLC
PLUMBING	Poe Plumbing, LLC
CONCRETE SLAB	Slabs & Drives, LLC
FIXTURES	Southern Bath & Kitchen
APPLIANCES	Sweet Home Appliance
LIGHTING	Visual Comfort & Co.
PHOTOGRAPHER	Jamison Skinner
HOME RENDERING	Estudio Test

**First time
home buyer
meet expert
home agent.**



HIRING A CONTRACTOR?

Here are some tips to help you contract with confidence!









First things first: Ask for the card!



Make sure that your builder, roofer, or any contractor performing over \$10,000 worth of work to your home has their license from the Alabama Home Builders Licensure Board as required by law.

Then...

-  For an added level of professionalism, verify that they are members of the Greater Birmingham Association of Homes Builders (birminghambuilder.com).
-  Ask to see proof of workers' comp coverage (when applicable) and liability insurance.
-  Agree on finance charges and make a payment schedule.
-  Make sure you have guarantees and warranties in writing.
-  Agree on start and finish dates and put them in writing.
-  Make sure the contract is specific, including details about size, colors, materials, brands, and models.

HOME BUILDERS LICENSURE BOARD CERTIFICATE OF LICENSE

12345

Licensee Construction Co., Inc.
John Doe Licensee
1111 Licensee Drive
Anytown, AL 36000

EFFECTIVE UNTIL DECEMBER 31, YYYY

DON'T fall for these lines!

"I just finished another job in the neighborhood and am trying to get rid of this extra material."

"You will have to pay me in cash since I am giving you such a great deal."

"This offer is good today only."

"I'll have to have all (or half) the money up front."

"I will need some additional money to order more supplies before I can finish the job."

"You need to have this work done immediately. You don't have time to think about it."

"The price of these materials will go up tomorrow."

Get more tips and find local licensed pros at ContractwithConfidence.com



Brought to you by the Home Builders Association of Alabama